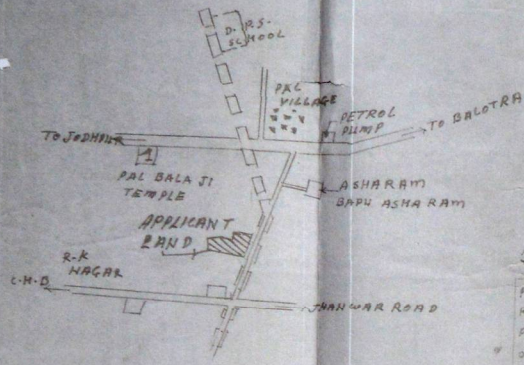


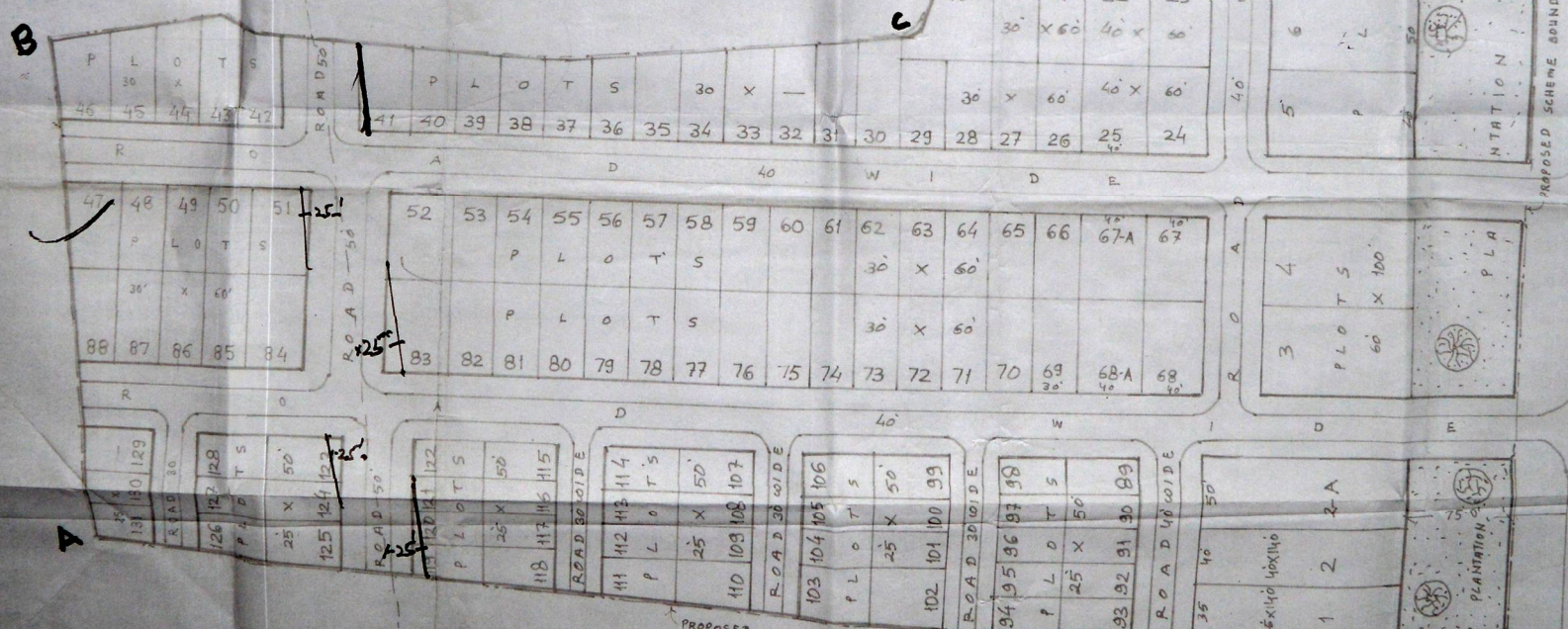
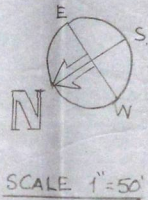
ASHOK VIHAR

PROPOSED RESIDENTIAL SCHEME ON KHASRA NO 84.84/2 OF VILLAGE PAL AT JODHPUR



AREA ANALYSIS

PLOT AREA	14.30 BIGHA	59.2 %
ROAD AREA	7.0	28.15 %
PLANTATION	2.36	3.64 %
O.C.F.	0.13	2.12 %
PARK	0.77	3.00 %
TOTAL		100.00 %



TO PAL →
PROPOSED BYE PASS ROAD 200' WIDE
← TO CHOPASNI

PROPOSED SCHEME BOUNDARY SITE A+H APPROVED AS MODIFIED H

2005
अशोक अशोक
जोधपुर शहर विकास
जोधपुर शहर, जोधपुर

जोधपुर शहर विकास, 2005
अशोक अशोक
जोधपुर शहर विकास
जोधपुर शहर, जोधपुर