 सत्यमेव जयते	<b>राजस्थान राजपत्र</b> <b>विशेषांक</b>	<b>RAJASTHAN GAZETTE</b> <b>Extraordinary</b>
	<b>साधिकार प्रकाशित</b>	<b>Published by Authority</b>
	फाल्गुन 09, बुधवार, शाके 1945-फरवरी 28, 2024 <i>Phalguna 09 Wednesday, Saka 1945- February 28, 2024</i>	

भाग 4 (ग)

उप-खण्ड(II)

राज्य सरकार तथा अन्य राज्य प्राधिकारियों द्वारा जारी किये गये कानूनी आदेश तथा  
अधिसूचनाएं।

**Department of Environment and Climate Change**  
Notification

**Jaipur, February 19, 2024**

**S.O.556** .-Whereas the draft notification of the Bhandra wetland, situated in village Bhandra, Tehsil Kherwara, district Udaipur Rajasthan was published as required by rule 7 of the Wetland (Conservation and Management) Rules, 2017 read with the Environment (Protection) Act, 1986 (Central Act No. 29 of 1986), vide notification number F.No.6(3)Env/2023 dated 30.05.2023 in the Rajasthan Gazette, Extraordinary, Part 4 (ga), sub-part (II) S.O. 94 dated 02.06.2023, inviting objections and suggestions from all persons likely to be affected thereby before expiry of the period of sixty days from the date on which the copies of the said notification were made available to the public.

And whereas, copies of the Gazette in which the said notification was published were made available to the public on the 02.06.2023.

And whereas, no objections and suggestions were received on the said Draft Notification.

Now therefore, in exercise of the powers conferred by rule 7 of the Wetland (Conservation and Management) Rules, 2017 read with provisions of the Environment (Protection) Act, 1986 (Central Act No. 29 of 1986), the State Government hereby notifies Bhandra wetland, situated in village Bhandra, Tehsil Kherwara, district Udaipur Rajasthan as a wetland and that,-

- (i) the extent of the wetland /wetland complex and its zone of influence shall be as described in Schedule-I of this notification;
- (ii) the activities prohibited within the wetland and its zone of influence shall be as listed in Schedule-II of this notification;
- (iii) the activities regulated within the wetland and its zone of influence, i.e. permitted only with permission of the State Government shall be as listed in Schedule-III of this notification. Request for permission for regulated activities may be made to the District Environment Committee headed by the District Collector; and
- (iv) the State Wetland Authority, Rajasthan shall monitor the enforcement of the provisions of this notification.

**Schedule-I**

**Bhanda Wetland Complex comprising of total area of 54.71 Hectare within the following boundary delineation:-**

**The geo-coordinates of Bhanda Wetland of Udaipur, Rajasthan**

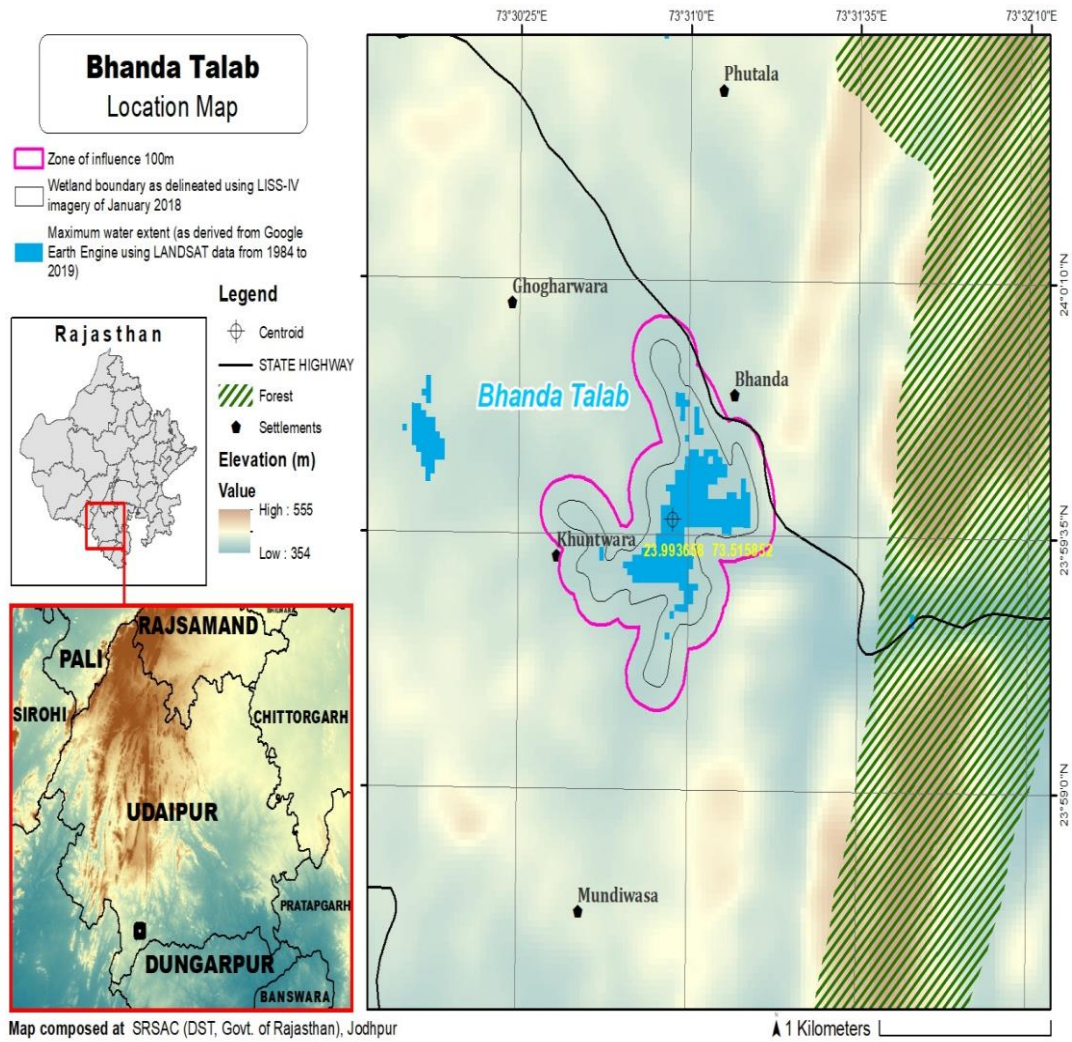
Bhanda Talab								
S.no	Latitude	Longitude	S.no	Latitude	Longitude	S.no	Latitude	Longitude
1	23.990661	73.517830	20	23.993151	73.510697	39	24.000234	73.514563
2	23.989877	73.517420	21	23.993406	73.509781	40	24.000493	73.515440
3	23.989678	73.516523	22	23.994090	73.509299	41	23.999949	73.516155
4	23.989108	73.515876	23	23.994340	73.510197	42	23.999088	73.516205
5	23.988227	73.515705	24	23.994023	73.511080	43	23.998573	73.516942
6	23.987408	73.515378	25	23.993367	73.511731	44	23.997861	73.517524
7	23.987416	73.514480	26	23.992566	73.512052	45	23.997111	73.518053
8	23.988155	73.514401	27	23.992170	73.512449	46	23.996370	73.518598
9	23.988964	73.514811	28	23.992446	73.513271	47	23.995846	73.519192
10	23.989822	73.515083	29	23.992864	73.514082	48	23.996630	73.519412
11	23.990574	73.515562	30	23.993629	73.514513	49	23.995983	73.520011
12	23.990657	73.514723	31	23.994502	73.514317	50	23.995165	73.520408
13	23.990430	73.513783	32	23.995344	73.514524	51	23.994307	73.520669
14	23.990933	73.513295	33	23.995737	73.515379	52	23.993415	73.520667
15	23.990712	73.512400	34	23.996192	73.516132	53	23.993114	73.519795
16	23.990517	73.511498	35	23.997054	73.516023	54	23.992973	73.518837
17	23.991284	73.511071	36	23.997882	73.515654	55	23.993145	73.517883
18	23.991771	73.510339	37	23.998678	73.515216	56	23.992758	73.517116
19	23.992448	73.510909	38	23.999382	73.514615	57	23.991923	73.517454

**Details of Catchment Area/Zone of Influence of Bhanda Wetland falling within the boundary limit of Udaipur, Rajasthan:- Total Area Of = 57.82 ha**

**The geo-coordinates of Bhanda Wetland and its Zone of influence Bhanda**

Bhanda Talab								
S.no	Latitude	Longitude	S.no	Latitude	Longitude	S.no	Latitude	Longitude
1	23.986599	73.514080	20	23.993710	73.512651	39	23.997517	73.519260
2	23.987183	73.513367	21	23.993484	73.513378	40	23.997297	73.520180
3	23.988059	73.513283	22	23.994302	73.513365	41	23.996591	73.520762
4	23.988865	73.513702	23	23.995188	73.513388	42	23.995783	73.521180
5	23.989526	73.513787	24	23.995971	73.513828	43	23.994946	73.521519
6	23.989704	73.512867	25	23.996477	73.514626	44	23.994063	73.521665
7	23.989598	73.512002	26	23.996962	73.515007	45	23.993173	73.521607
8	23.989717	73.511049	27	23.997784	73.514622	46	23.992498	73.521012
9	23.990349	73.510386	28	23.998528	73.514095	47	23.992254	73.520081
10	23.990966	73.509764	29	23.999289	73.513600	48	23.992098	73.519125
11	23.991752	73.509363	30	24.000171	73.513520	49	23.991863	73.518737
12	23.992533	73.509451	31	24.000950	73.513959	50	23.991033	73.519054
13	23.993074	73.508677	32	24.001378	73.514803	51	23.990212	73.518721
14	23.993877	73.508288	33	24.001348	73.515771	52	23.989410	73.518306
15	23.994706	73.508590	34	24.000914	73.516618	53	23.988878	73.517531
16	23.995146	73.509418	35	24.000150	73.517105	54	23.988541	73.516758
17	23.995226	73.510379	36	23.999395	73.517436	55	23.987660	73.516584
18	23.994978	73.511304	37	23.998727	73.518085	56	23.986863	73.516168
19	23.994423	73.512065	38	23.997971	73.518603	57	23.986402	73.515352

**The detailed Map of Bhandra Wetland and its Zone of Influence is annexed herewith as Schedule-I ('A').**



**Schedule-II****Prohibited Activities in Bhanda Wetland:-**

1. Conversion for non wetland uses including encroachments of any kind;
2. Setting up of any new industry and expansion of existing industries;
3. Manufacture or/and handling or/and storage or/and disposal of construction and demolition waste covered under the Construction and Demolition Waste Management Rules, 2016; hazardous substances covered under the Manufacture, Storage and Import of Hazardous Chemical Rules, 1989 or the Rules for Manufacture, Use, Import, Export and Storage of Hazardous Microorganism Genetically Engineered organized or cells, 1989 or the Hazardous Waste (Management, Handling and Transboundary Movement) Rules, 2008; electronic waste covered under the E-Waste (Management) Rules 2016; plastic waste covered under Plastic Waste (Management) Rules, 2016;
4. Solid waste storage and disposal;
5. Discharge of untreated waste and effluents from industries, cities, towns, villages and other human settlements;
6. Any construction of permanent nature except for boat jetties within fifty metres from the mean high flood level observed in the past ten years calculated from the date of commencement of these rules;
7. Commercial mining, stone quarrying and crushing units
8. Commercial water extraction Establishment of large scale commercial livestock and poultry farms;
9. Reducing area/ capacity of the water body;
10. Feeding of fishes and migratory birds by the public;
11. Any type of poaching.

**Prohibited Activities in Catchment Area/Zone of Influence:-**

1. Discharge of untreated Solid/liquid waste and effluents;
2. Manufacture or/and handling or/and storage or/and disposal of construction and demolition waste covered under the Construction and Demolition Waste Management Rules, 2016; hazardous substances covered under the Manufacture, Storage and Import of Hazardous Chemical Rules, 1989 or the Rules for Manufacture, Use, Import, Export and Storage of Hazardous Microorganism Genetically Engineered organized or cells, 1989 or the Hazardous Waste (Management, Handling and Transboundary Movement) Rules, 2008; electronic waste covered under the E-Waste (Management) Rules 2016; plastic waste covered under Plastic Waste (Management) Rules, 2016;
3. Extraction of commercial water including groundwater.
4. Any type of poaching;

**Schedule-III****Regulated Activities in Bhanda Wetland:-**

1. Fisheries;
2. Plying of boats;
3. Desilting;
4. Construction of temporary structures;
5. Water extraction for certain purposes.

**Regulated Activities in Catchment Area/Zone of Influence:-**

1. Conversion of land for any type of construction;
2. Setting up of any new industries and expansion of existing industries;
3. Mining.

**[F.No.6 (3) Env/2023]**

**By order of the Governor,**

Shikhar Agrawal,  
**Additional Chief Secretary to the Government.**

---

**Government Central Press, Jaipur.**