 सत्यमेव जयते	राजस्थान राजपत्र विशेषांक	RAJASTHAN GAZETTE Extraordinary
	साधिकार प्रकाशित	Published by Authority
	ज्येष्ठ 12, शुक्रवार, शाके 1945-जून 02, 2023 <i>Jyaistha 12, Friday, Saka 1945- June 02, 2023</i>	

भाग 4 (ग)

उप-खण्ड(II)

राज्य सरकार तथा अन्य राज्य प्राधिकारियों द्वारा जारी किये गये कानूनी आदेश तथा अधिसूचनाएं।

Department of Environment and Climate Change
Notification

Jaipur, May 30, 2023

S.O.87 .- The following draft of the notification, which the State Government proposes to issue in exercise of the powers conferred by rule 7 of the Wetland (Conservation and Management) Rules, 2017 read with Environment (Protection) Act, 1986 (Central Act No. 29 of 1986), is hereby published for the information of the persons likely to be concerned or affected thereby and notice is hereby given to them that the said draft notification shall be taken into consideration after the expiry of a period of sixty days from the date on which copies of this notification as published in the Official Gazette are made available to the public.

Any person interested in making any objection or suggestion on the proposals contained in the draft notification may forward the same in writing for consideration to the Director cum Joint Secretary, Department of Environment and Climate Change Room No. 8240 SSO Building, Government Secretariat, Jaipur, Rajasthan or at env_raj@yahoo.co.in.

Draft Notification

WHEREAS, the Bardha Dam wetland, situated in Village Devdungri, Tehsil Talera, district Bundi Rajasthan, is considered to be critically significant for its ecosystem services and biodiversity values for the local communities and society at large;

AND WHEREAS, it is considered that for sustaining the said values, the ecological character of wetland ecosystem needs to be maintained by regulating developmental activities within the wetland as well as within its zone of influence;

NOW THEREFORE, the State Government declares that the Bardha Dam wetland shall be covered under the provisions of the Wetlands (Conservation and Management) Rules, 2017 and notifies that,-

- (i) the extent of the wetland /wetland complex and its zone of influence shall be as described in Schedule-I of this notification;
- (ii) the activities prohibited within the wetland and its zone of influence shall be as listed in Schedule-II of this notification;
- (iii) the activities regulated within the wetland and its zone of influence, i.e. permitted only with permission of the State Government shall be as listed in Schedule-III of this notification. Request for permission for regulated activities may be made to the District

Environment Committee headed by the District Collector; and

- (iv) the State Wetland Authority, Rajasthan shall monitor the enforcement of the provisions of this notification.

Schedule-I

Bardha Dam Wetland Complex comprising of total area of 1365.78 Hectare within the following boundary delineation:-

The geo-coordinates of Bardha Dam Wetland of Bundi, Rajasthan

Bardha Dam								
S.no	Latitude	Longitude	S.no	Latitude	Longitude	S.no	Latitude	Longitude
1	25.222674	75.688468	76	25.230813	75.660037	151	25.233705	75.709277
2	25.223411	75.687939	77	25.231193	75.660852	152	25.233462	75.710221
3	25.224170	75.687441	78	25.231935	75.661375	153	25.233341	75.711186
4	25.224957	75.686978	79	25.232201	75.662293	154	25.233185	75.712145
5	25.225745	75.686516	80	25.232447	75.663234	155	25.232426	75.712601
6	25.226465	75.685974	81	25.232633	75.664193	156	25.231641	75.713054
7	25.226890	75.685118	82	25.232875	75.665134	157	25.230942	75.713653
8	25.227087	75.684168	83	25.233270	75.666001	158	25.230141	75.714050
9	25.227080	75.683192	84	25.233675	75.666866	159	25.229310	75.714372
10	25.226877	75.682236	85	25.234198	75.667650	160	25.228577	75.714872
11	25.226437	75.681392	86	25.234955	75.668168	161	25.227684	75.714874
12	25.225752	75.680775	87	25.235785	75.668506	162	25.226805	75.715019
13	25.224934	75.680386	88	25.236581	75.668952	163	25.225989	75.715403
14	25.224046	75.680289	89	25.237347	75.669436	164	25.225313	75.716035
15	25.223187	75.680523	90	25.237913	75.670195	165	25.224723	75.716769
16	25.222487	75.681109	91	25.238478	75.670954	166	25.224086	75.717453
17	25.221947	75.681888	92	25.238912	75.671801	167	25.223423	75.718083
18	25.221139	75.682249	93	25.239211	75.672725	168	25.222578	75.718387
19	25.220253	75.682240	94	25.239661	75.673557	169	25.221692	75.718334
20	25.219522	75.681789	95	25.240339	75.674194	170	25.220834	75.718076
21	25.219633	75.680941	96	25.241117	75.674667	171	25.220086	75.717620
22	25.220440	75.680543	97	25.241915	75.675107	172	25.219479	75.716913
23	25.221167	75.680026	98	25.242713	75.675546	173	25.218614	75.716695
24	25.221488	75.679138	99	25.243470	75.676059	174	25.217749	75.716794
25	25.221322	75.678181	100	25.244201	75.676622	175	25.217049	75.717385
26	25.221349	75.677223	101	25.244817	75.677326	176	25.216207	75.717632
27	25.221580	75.676276	102	25.245613	75.677740	177	25.215383	75.717306
28	25.221872	75.675349	103	25.246482	75.677902	178	25.215105	75.716408
29	25.221860	75.674370	104	25.247349	75.677745	179	25.214998	75.715440
30	25.221734	75.673403	105	25.248174	75.677404	180	25.214397	75.714822
31	25.221472	75.672484	106	25.249060	75.677413	181	25.213553	75.715101
32	25.220838	75.671827	107	25.249894	75.677741	182	25.212783	75.715595
33	25.220751	75.670872	108	25.250561	75.678385	183	25.212004	75.716072
34	25.220891	75.669911	109	25.251057	75.679200	184	25.211431	75.716776
35	25.220919	75.668935	110	25.251213	75.680155	185	25.210842	75.717320
36	25.220935	75.667956	111	25.251250	75.681135	186	25.210009	75.717082
37	25.221101	75.666993	112	25.251285	75.682116	187	25.209747	75.716213
38	25.221278	75.666031	113	25.251146	75.683079	188	25.210053	75.715303
39	25.221985	75.665734	114	25.250951	75.684036	189	25.209946	75.714342
40	25.222800	75.666129	115	25.250757	75.684994	190	25.209507	75.713488

41	25.223597	75.666569	116	25.250625	75.685963	191	25.209381	75.712531
42	25.224381	75.667037	117	25.250531	75.686939	192	25.209425	75.711552
43	25.225181	75.667472	118	25.250438	75.687915	193	25.209587	75.710594
44	25.225877	75.668080	119	25.250242	75.688862	194	25.210333	75.710379
45	25.226547	75.668728	120	25.249517	75.689385	195	25.211005	75.711017
46	25.227326	75.669001	121	25.248697	75.689081	196	25.211854	75.711181
47	25.227532	75.668100	122	25.247837	75.688901	197	25.212573	75.710652
48	25.227556	75.667120	123	25.246975	75.689095	198	25.213114	75.709872
49	25.227549	75.666141	124	25.246249	75.689626	199	25.213502	75.708994
50	25.227433	75.665169	125	25.245837	75.690492	200	25.213711	75.708048
51	25.227331	75.664194	126	25.245436	75.691369	201	25.214125	75.707181
52	25.227043	75.663280	127	25.245038	75.692246	202	25.214516	75.706303
53	25.226563	75.662465	128	25.244736	75.693170	203	25.214781	75.705367
54	25.226336	75.661521	129	25.244258	75.693977	204	25.215030	75.704425
55	25.226249	75.660545	130	25.244033	75.694883	205	25.215242	75.703472
56	25.226167	75.659568	131	25.244307	75.695815	206	25.215422	75.702511
57	25.226341	75.658615	132	25.244560	75.696755	207	25.215390	75.701549
58	25.226466	75.657652	133	25.244190	75.697521	208	25.215093	75.700624
59	25.226617	75.656686	134	25.243307	75.697415	209	25.214980	75.699666
60	25.226691	75.655715	135	25.242416	75.697468	210	25.215374	75.698801
61	25.226234	75.654893	136	25.241569	75.697678	211	25.215647	75.697882
62	25.225951	75.653973	137	25.240932	75.698351	212	25.215693	75.696904
63	25.226217	75.654038	138	25.240385	75.699126	213	25.215836	75.695941
64	25.226689	75.654864	139	25.239841	75.699903	214	25.215731	75.694974
65	25.226994	75.655782	140	25.239253	75.700641	215	25.215337	75.694095
66	25.227040	75.656760	141	25.238504	75.701175	216	25.215033	75.693188
67	25.227180	75.657727	142	25.237846	75.701832	217	25.214968	75.692210
68	25.227440	75.658655	143	25.237365	75.702644	218	25.215419	75.691549
69	25.227899	75.659485	144	25.236952	75.703494	219	25.216306	75.691488
70	25.228698	75.659855	145	25.236414	75.704276	220	25.217184	75.691349
71	25.229495	75.659570	146	25.235880	75.705063	221	25.218053	75.691126
72	25.230143	75.658900	147	25.235390	75.705879	222	25.218911	75.690859
73	25.230740	75.658172	148	25.234963	75.706741	223	25.219754	75.690537
74	25.231453	75.658235	149	25.234447	75.707533	224	25.220600	75.690261
75	25.231005	75.659082	150	25.234008	75.708361	225	25.221327	75.689692

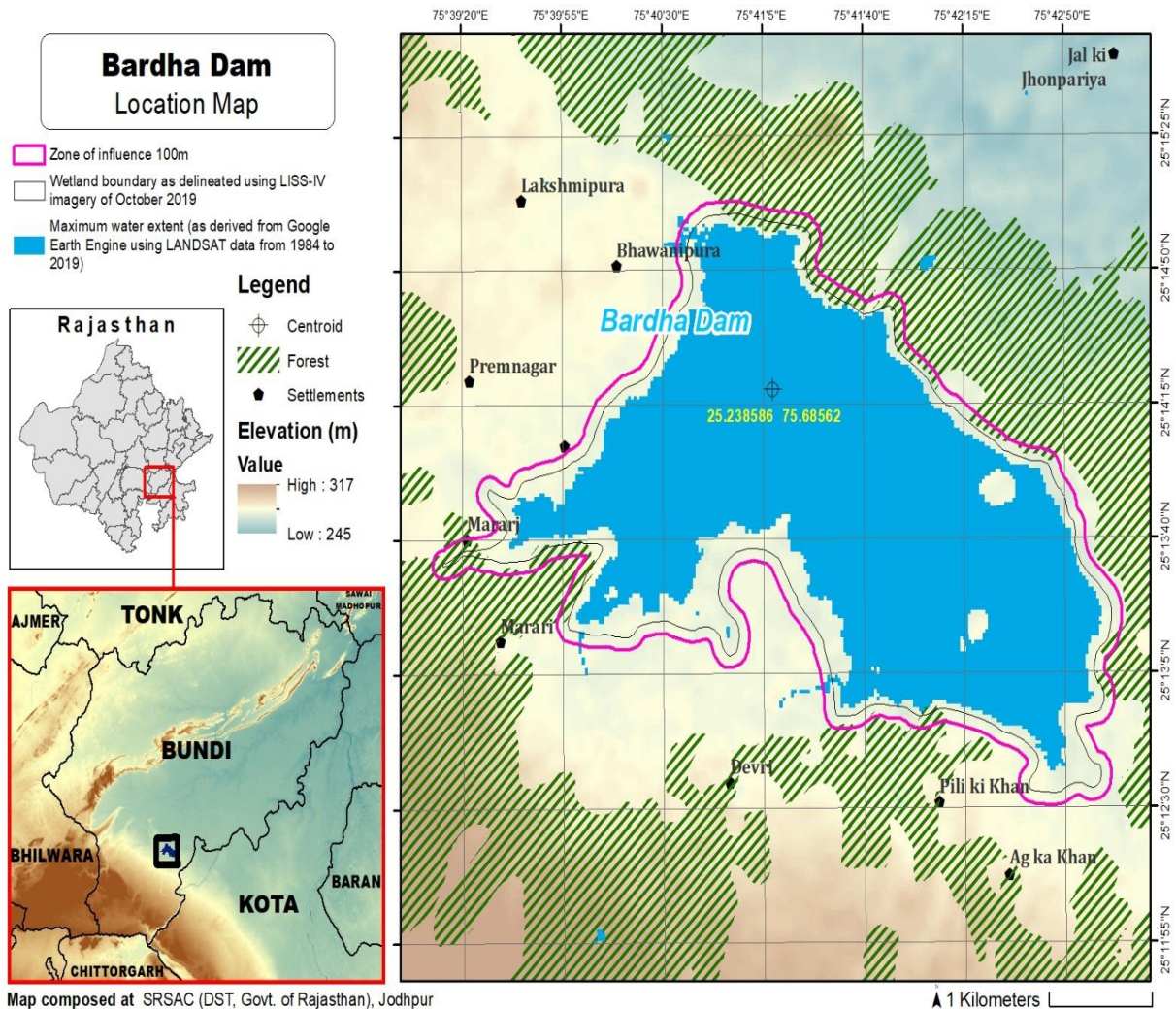
Details of Catchment Area/Zone of Influence of Bardha Dam Wetland falling within the boundary limit of Bundi, Rajasthan:- Total Area Of = 228.55 ha
The geo-coordinates of Bardha Dam Wetland and its Zone of influence of Bardha Dam

Bardha Dam								
S.no	Latitude	Longitude	S.no	Latitude	Longitude	S.no	Latitude	Longitude
1	25.245091	75.695321	77	25.214028	75.704720	153	25.225363	75.660676
2	25.245364	75.696254	78	25.214260	75.703773	154	25.225281	75.659699
3	25.245455	75.697215	79	25.214454	75.702815	155	25.225372	75.658730
4	25.245061	75.698091	80	25.214542	75.701853	156	25.225551	75.657776
5	25.244273	75.698505	81	25.214244	75.700929	157	25.225675	75.656805
6	25.243387	75.698416	82	25.214082	75.699974	158	25.225785	75.655847
7	25.242497	75.698445	83	25.214211	75.699010	159	25.225295	75.655033
8	25.241725	75.698825	84	25.214669	75.698171	160	25.225064	75.654092
9	25.241177	75.699599	85	25.214775	75.697209	161	25.225166	75.653136
10	25.240643	75.700385	86	25.214916	75.696244	162	25.225901	75.652657

11	25.240055	75.701123	87	25.214880	75.695273	163	25.226745	75.652923
12	25.239363	75.701732	88	25.214476	75.694399	164	25.227103	75.653782
13	25.238660	75.702328	89	25.214164	75.693490	165	25.227566	75.654616
14	25.238169	75.703126	90	25.214084	75.692513	166	25.227861	75.655539
15	25.237743	75.703973	91	25.214118	75.691539	167	25.227923	75.656515
16	25.237203	75.704754	92	25.214668	75.690795	168	25.228050	75.657484
17	25.236670	75.705540	93	25.215521	75.690526	169	25.228322	75.658407
18	25.236172	75.706352	94	25.216413	75.690504	170	25.228967	75.658776
19	25.235745	75.707214	95	25.217286	75.690315	171	25.229603	75.658092
20	25.235248	75.708022	96	25.218155	75.690092	172	25.230214	75.657378
21	25.234804	75.708847	97	25.219002	75.689783	173	25.231026	75.657002
22	25.234506	75.709767	98	25.219860	75.689526	174	25.231870	75.657252
23	25.234263	75.710711	99	25.220623	75.689040	175	25.232350	75.658044
24	25.234217	75.711688	100	25.221342	75.688461	176	25.232102	75.658960
25	25.233965	75.712627	101	25.222007	75.687807	177	25.231749	75.659847
26	25.233319	75.713278	102	25.222702	75.687198	178	25.232329	75.660416
27	25.232493	75.713631	103	25.223496	75.686763	179	25.232877	75.661178
28	25.231776	75.714205	104	25.224267	75.686271	180	25.233093	75.662128
29	25.231043	75.714764	105	25.225054	75.685809	181	25.233328	75.663073
30	25.230190	75.715037	106	25.225800	75.685298	182	25.233514	75.664032
31	25.229465	75.715557	107	25.226166	75.684411	183	25.233769	75.664970
32	25.228619	75.715852	108	25.226207	75.683435	184	25.234225	75.665802
33	25.227727	75.715856	109	25.226012	75.682478	185	25.234613	75.666681
34	25.226854	75.716029	110	25.225451	75.681725	186	25.235317	75.667260
35	25.226113	75.716558	111	25.224638	75.681340	187	25.236146	75.667607
36	25.225504	75.717271	112	25.223758	75.681349	188	25.236941	75.668052
37	25.224888	75.717978	113	25.223062	75.681918	189	25.237735	75.668500
38	25.224257	75.718667	114	25.222500	75.682678	190	25.238337	75.669217
39	25.223475	75.719122	115	25.221713	75.683131	191	25.238903	75.669976
40	25.222617	75.719377	116	25.220832	75.683274	192	25.239440	75.670759
41	25.221726	75.719341	117	25.219949	75.683167	193	25.239804	75.671646
42	25.220856	75.719128	118	25.219128	75.682802	194	25.240113	75.672566
43	25.220011	75.718839	119	25.218647	75.682009	195	25.240723	75.673264
44	25.219355	75.718183	120	25.218525	75.681056	196	25.241481	75.673770
45	25.218637	75.717702	121	25.218991	75.680246	197	25.242279	75.674210
46	25.217843	75.717939	122	25.219757	75.679758	198	25.243077	75.674649
47	25.217086	75.718438	123	25.220530	75.679328	199	25.243843	75.675148
48	25.216224	75.718614	124	25.220443	75.678380	200	25.244573	75.675711
49	25.215368	75.718400	125	25.220383	75.677410	201	25.245236	75.676358
50	25.214633	75.717862	126	25.220609	75.676462	202	25.245985	75.676847
51	25.214302	75.716972	127	25.220873	75.675525	203	25.246861	75.676886
52	25.214132	75.716010	128	25.220972	75.674565	204	25.247681	75.676514
53	25.213443	75.716308	129	25.220859	75.673596	205	25.248561	75.676369
54	25.212668	75.716795	130	25.220403	75.672830	206	25.249445	75.676492
55	25.212187	75.717524	131	25.219934	75.672012	207	25.250273	75.676851
56	25.211532	75.718162	132	25.219838	75.671046	208	25.250974	75.677452
57	25.210655	75.718313	133	25.219935	75.670072	209	25.251533	75.678209
58	25.209783	75.718111	134	25.220036	75.669106	210	25.251965	75.679062
59	25.209115	75.717473	135	25.220023	75.668126	211	25.252100	75.680025
60	25.208824	75.716563	136	25.220164	75.667159	212	25.252138	75.681005
61	25.209006	75.715613	137	25.220330	75.666195	213	25.252174	75.681986
62	25.209098	75.714687	138	25.220605	75.665272	214	25.252085	75.682955
63	25.208660	75.713832	139	25.221342	75.664732	215	25.251891	75.683913

64	25.208480	75.712877	140	25.222210	75.664784	216	25.251696	75.684871
65	25.208507	75.711897	141	25.223030	75.665165	217	25.251535	75.685834
66	25.208580	75.710919	142	25.223833	75.665592	218	25.251441	75.686810
67	25.208842	75.709984	143	25.224616	75.666062	219	25.251347	75.687786
68	25.209522	75.709380	144	25.225413	75.666504	220	25.251210	75.688753
69	25.210402	75.709398	145	25.226150	75.667046	221	25.250821	75.689612
70	25.211156	75.709876	146	25.226659	75.667256	222	25.250126	75.690212
71	25.211879	75.710036	147	25.226665	75.666277	223	25.249256	75.690367
72	25.212419	75.709256	148	25.226549	75.665304	224	25.248423	75.690046
73	25.212762	75.708353	149	25.226444	75.664330	225	25.247572	75.689940
74	25.212988	75.707414	150	25.226040	75.663482	226	25.246856	75.690423
75	25.213423	75.706558	151	25.225650	75.662605	227	25.246467	75.691306
76	25.213767	75.705658	152	25.225451	75.661652	228	25.246062	75.692180
						229	25.245713	75.693082
						230	25.245351	75.693971

The detailed Map of Bardha Dam Wetland and its Zone of Influence is annexed herewith as Schedule-I ('A').



Schedule-II**Prohibited Activities in Bardha Dam Wetland :-**

1. Conversion for non wetland uses including encroachments of any kind;
2. Setting up of any new industry and expansion of existing industries;
3. Manufacture or/and handling or/and storage or/and disposal of construction and demolition waste covered under the Construction and Demolition Waste Management Rules, 2016; hazardous substances covered under the Manufacture, Storage and Import of Hazardous Chemical Rules, 1989 or the Rules for Manufacture, Use, Import, Export and Storage of Hazardous Microorganism Genetically Engineered organized or cells, 1989 or the Hazardous Waste (Management, Handling and Transboundary Movement) Rules, 2008;electronic waste covered under the E-Waste (Management) Rules 2016; plastic waste covered under Plastic Waste (Management) Rules, 2016;
4. Solid waste storage and disposal;
5. Discharge of untreated waste and effluents from industries, cities, towns, villages and other human settlements;
6. Any construction of permanent nature except for boat jetties within fifty metres from the mean high flood level observed in the past ten years calculated from the date of commencement of these rules;
7. Commercial mining, stone quarrying and crushing units
8. Commercial water extraction Establishment of large scale commercial livestock and poultry farms;
9. Reducing area/ capacity of the water body;
10. Feeding of fishes and migratory birds by the public;
11. Any type of poaching.

Prohibited Activities in Catchment Area/Zone of Influence :-

1. Discharge of untreated Solid/liquid waste and effluents;
2. Manufacture or/and handling or/and storage or/and disposal of construction and demolition waste covered under the Construction and Demolition Waste Management Rules, 2016; hazardous substances covered under the Manufacture, Storage and Import of Hazardous Chemical Rules, 1989 or the Rules for Manufacture, Use, Import, Export and Storage of Hazardous Microorganism Genetically Engineered organized or cells, 1989 or the Hazardous Waste (Management, Handling and Transboundary Movement) Rules, 2008;electronic waste covered under the E-Waste (Management) Rules 2016; plastic waste covered under Plastic Waste (Management) Rules, 2016;
3. Extraction of commercial water including groundwater.
4. Any type of poaching;

Schedule-III**Regulated Activities in Bardha Dam Wetland :-**

1. Fisheries;
2. Plying of boats;
3. Desilting;
4. Construction of temporary structures;
5. Water extraction for certain purposes.

Regulated Activities in Catchment Area/Zone of Influence :-

1. Conversion of land for any type of construction;
2. Setting up of any new industries and expansion of existing industries;
3. Mining.

[F.No.6 (3) Env/2023]
By order of the Governor,

Shikhar Agrawal,
Additional Chief Secretary to the Government.

Government Central Press, Jaipur.