



सत्यमेव जयते

राजस्थान राजपत्र  
विशेषांक

साधिकार प्रकाशित

RAJASTHAN GAZETTE  
Extraordinary

Published by Authority

भाद्र 15, बुधवार, शाके 1945-सितम्बर 06, 2023  
Bhadra 15, Wednesday, Saka 1945- September 06, 2023

भाग 4 (ग)

उप-खण्ड (I)

राज्य सरकार तथा अन्य राज्य-प्राधिकारियों द्वारा जारी किये गये (सामान्य आदेशों, उप-विधियों आदि को सम्मिलित करते हुए) सामान्य कानूनी नियम।

**Department of Environment and Climate Change**  
Notification

**Jaipur, August 24, 2023**

**G.S.R.122** .-The following draft of the notification, which the State Government proposes to issue in exercise of the powers conferred by rule 7 of the Wetland (Conservation and Management) Rules, 2017 read with provisions of the Environment (Protection) Act, 1986 (Central Act No. 29 of 1986), is hereby published for the information of the persons likely to be concerned or affected thereby and notice is hereby given to them that the said draft notification shall be taken into consideration after the expiry of a period of sixty days from the date on which copies of this notification as published in the Official Gazette are made available to the public.

Any person interested in making any objection or suggestion on the proposals contained in the draft notification may forward the same in writing for consideration to the State Government within the period of 60 days as specified above to the Director cum Joint Secretary, Department of Environment and Climate Change Room No. 8240 SSO Building, Government Secretariat, Jaipur, Rajasthan or at env\_raj@yahoo.co.in.

#### **Draft Notification**

WHEREAS, the Dorai Dam wetland, situated in village Dorai, Tehsil Begun, district Chittorgarh Rajasthan, is considered to be critically significant for its ecosystem services and biodiversity values for the local communities and society at large;

AND WHEREAS, it is considered that for sustaining the said values, the ecological character of wetland ecosystem needs to be maintained by regulating developmental activities within the wetland as well as within its zone of influence;

NOW THEREFORE, the State Government declares that the Dorai Dam wetland shall be covered under the provisions of the Wetlands (Conservation and Management) Rules, 2017 and notifies that,-

- (i) the extent of the wetland /wetland complex and its zone of influence shall be as described in Schedule-I of this notification;
- (ii) the activities prohibited within the wetland and its zone of influence shall be as listed in Schedule-II of this notification;
- (iii) the activities regulated within the wetland and its zone of influence, i.e. permitted only with permission of the State Government shall be as listed in Schedule-III of this

notification. Request for permission for regulated activities may be made to the District Environment Committee headed by the District Collector; and

- (iv) the State Wetland Authority, Rajasthan shall monitor the enforcement of the provisions of this notification.

### Schedule-I

**Dorai Dam Wetland comprising of total area of 209.98 Hectare within the following boundary delineation:-**

**The geo-coordinates of Dorai Dam Wetland of Chittorgarh, Rajasthan**

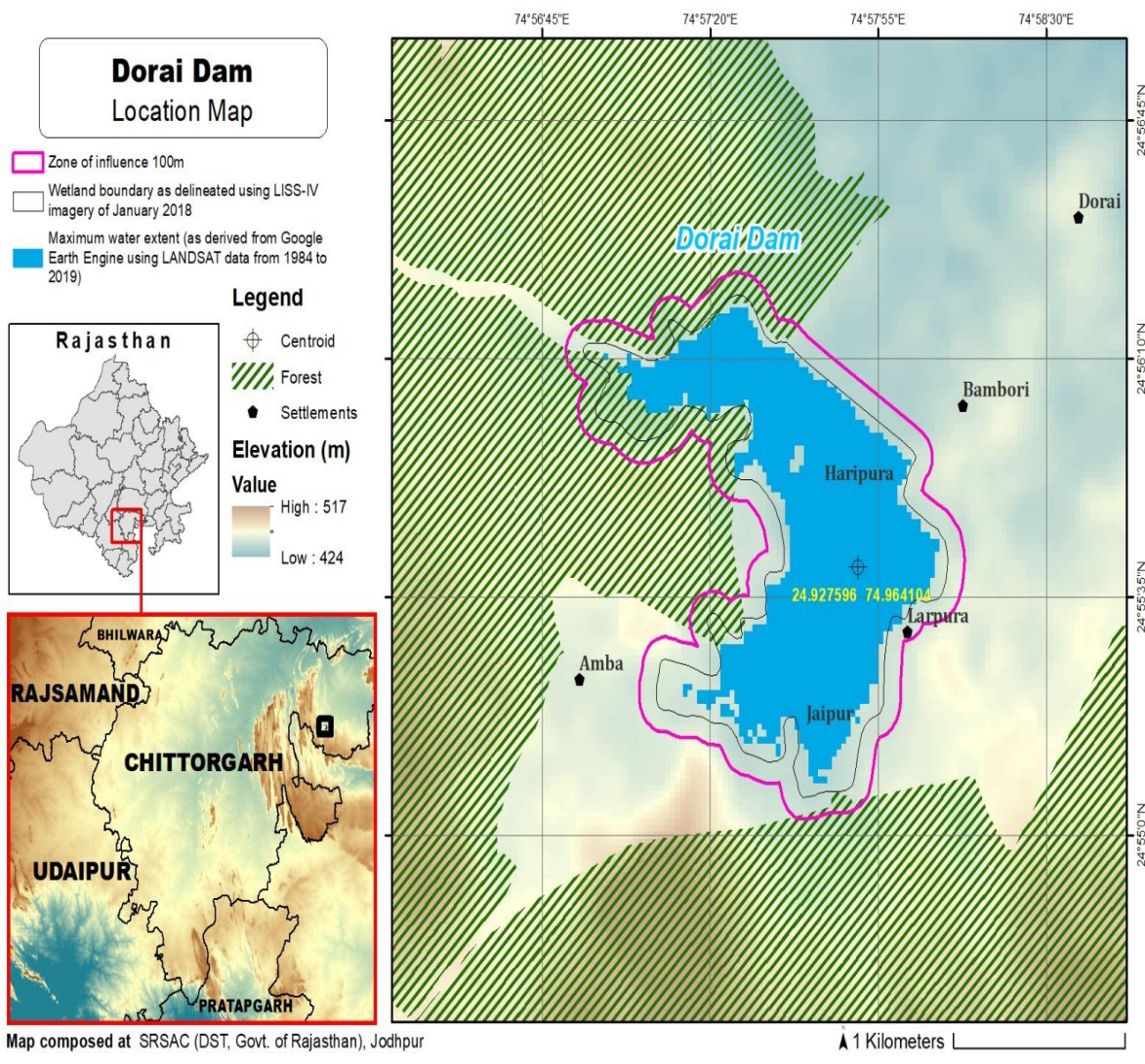
Dorai Dam								
S.No.	Latitude	Longitude	S.No.	Latitude	Longitude	S.No.	Latitude	Longitude
1	24.921383	74.964749	35	24.925664	74.958694	69	24.937167	74.953308
2	24.920631	74.964252	36	24.926515	74.958771	70	24.937693	74.953477
3	24.919760	74.964043	37	24.927338	74.958879	71	24.937265	74.954335
4	24.918884	74.963853	38	24.927593	74.959747	72	24.937581	74.955186
5	24.918502	74.963060	39	24.928471	74.959825	73	24.938128	74.955959
6	24.918448	74.962084	40	24.929347	74.959632	74	24.938651	74.956742
7	24.918262	74.961132	41	24.930155	74.959225	75	24.938580	74.957655
8	24.918843	74.960589	42	24.930826	74.958580	76	24.937887	74.958254
9	24.919698	74.960431	43	24.931213	74.957738	77	24.937114	74.958741
10	24.920534	74.960663	44	24.931381	74.956796	78	24.936815	74.959592
11	24.921408	74.960535	45	24.932171	74.956477	79	24.936450	74.960432
12	24.921173	74.959826	46	24.932774	74.957045	80	24.935933	74.961229
13	24.920293	74.959914	47	24.933253	74.957748	81	24.935445	74.962050
14	24.919709	74.959332	48	24.934082	74.957729	82	24.934965	74.962876
15	24.919863	74.958384	49	24.934100	74.956817	83	24.934486	74.963702
16	24.920123	74.957455	50	24.933647	74.955973	84	24.934006	74.964529
17	24.920865	74.956924	51	24.933931	74.955250	85	24.933526	74.965355
18	24.921256	74.956098	52	24.934189	74.954331	86	24.933047	74.966181
19	24.921508	74.955183	53	24.933657	74.953651	87	24.932555	74.966999
20	24.921560	74.954212	54	24.933099	74.952903	88	24.931862	74.967298
21	24.921770	74.953269	55	24.932800	74.951985	89	24.931063	74.966877
22	24.922149	74.952485	56	24.932955	74.951057	90	24.930249	74.966965
23	24.923029	74.952520	57	24.933483	74.950273	91	24.929704	74.967738
24	24.923850	74.952819	58	24.933626	74.949324	92	24.929245	74.968577
25	24.923708	74.953767	59	24.934327	74.948986	93	24.928564	74.969169
26	24.923472	74.954708	60	24.935069	74.949518	94	24.927684	74.969274
27	24.923192	74.955636	61	24.935743	74.949385	95	24.926813	74.969083
28	24.923807	74.956167	62	24.936098	74.948492	96	24.926268	74.968408
29	24.924628	74.955808	63	24.936750	74.948500	97	24.926275	74.967445
30	24.925426	74.955379	64	24.936769	74.949476	98	24.925594	74.966908
31	24.925586	74.956093	65	24.936536	74.950414	99	24.925517	74.966051
32	24.924903	74.956717	66	24.936252	74.951343	100	24.924669	74.965766
33	24.925012	74.957370	67	24.936046	74.952288	101	24.923782	74.965654
34	24.925558	74.957743	68	24.936365	74.953186	102	24.922890	74.965603
						103	24.922000	74.965550

**Details of Catchment Area/Zone of Influence of Dorai Dam Wetland falling within the boundary limit of Chittorgarh, Rajasthan:- Total Area Of = 101.27 Ha**

**The geo-coordinates of Dorai Dam Wetland and its Zone of influence**

Dorai Dam								
S.No.	Latitude	Longitude	S.No.	Latitude	Longitude	S.No.	Latitude	Longitude
1	24.937801	74.959438	33	24.917779	74.963979	65	24.930321	74.957664
2	24.937621	74.960344	34	24.917607	74.963029	66	24.930442	74.956702
3	24.937087	74.961123	35	24.917530	74.962057	67	24.930909	74.955882
4	24.936581	74.961930	36	24.917358	74.961100	68	24.931731	74.955524
5	24.936096	74.962752	37	24.917619	74.960202	69	24.932615	74.955581
6	24.935616	74.963578	38	24.918372	74.959705	70	24.932932	74.954772
7	24.935137	74.964405	39	24.918809	74.959086	71	24.932820	74.954134
8	24.934657	74.965231	40	24.918994	74.958139	72	24.932304	74.953348
9	24.934177	74.966057	41	24.919236	74.957201	73	24.931988	74.952436
10	24.933698	74.966884	42	24.919816	74.956482	74	24.931895	74.951472
11	24.933200	74.967697	43	24.920370	74.955836	75	24.932184	74.950563
12	24.932525	74.968309	44	24.920613	74.954901	76	24.932654	74.949759
13	24.931654	74.968305	45	24.920682	74.953940	77	24.932862	74.948816
14	24.930875	74.967839	46	24.920899	74.952996	78	24.933444	74.948096
15	24.930320	74.968500	47	24.921176	74.952093	79	24.934313	74.947966
16	24.929862	74.969339	48	24.921892	74.951540	80	24.935094	74.948400
17	24.929175	74.969963	49	24.922777	74.951476	81	24.935558	74.947660
18	24.928321	74.970229	50	24.923652	74.951665	82	24.936341	74.947232
19	24.927433	74.970229	51	24.924453	74.952062	83	24.937174	74.947507
20	24.926563	74.970026	52	24.924781	74.952949	84	24.937630	74.948326
21	24.925800	74.969540	53	24.924595	74.953905	85	24.937653	74.949302
22	24.925403	74.968688	54	24.924401	74.954823	86	24.937535	74.950264
23	24.925200	74.967814	55	24.925212	74.954426	87	24.937240	74.951189
24	24.924666	74.967058	56	24.926073	74.954581	88	24.936960	74.952119
25	24.924022	74.966664	57	24.926582	74.955350	89	24.937655	74.952127
26	24.923131	74.966591	58	24.926516	74.956304	90	24.938423	74.952577
27	24.922239	74.966561	59	24.926426	74.957134	91	24.938617	74.953509
28	24.921385	74.966321	60	24.926737	74.957740	92	24.938238	74.954385
29	24.920776	74.965634	61	24.927612	74.957854	93	24.938698	74.955165
30	24.920108	74.965110	62	24.928211	74.958559	94	24.939258	74.955928
31	24.919230	74.964930	63	24.928901	74.958731	95	24.939614	74.956817
32	24.918364	74.964698	64	24.929715	74.958354	96	24.939550	74.957784
						97	24.939042	74.958582

The detailed Map of Dorai Dam Wetland and its Zone of Influence is annexed herewith as Schedule-I ('A').



### Schedule-II

#### Prohibited Activities in Dorai Dam Wetland:-

1. Conversion for non wetland uses including encroachments of any kind;
2. Setting up of any new industry and expansion of existing industries;
3. Manufacture or/and handling or/and storage or/and disposal of construction and demolition waste covered under the Construction and Demolition Waste Management Rules, 2016; hazardous substances covered under the Manufacture, Storage and Import of Hazardous Chemical Rules, 1989 or the Rules for Manufacture, Use, Import, Export and Storage of Hazardous Microorganism Genetically Engineered organized or cells, 1989 or the Hazardous Waste (Management, Handling and Transboundary Movement) Rules, 2008; electronic waste covered under the E-Waste (Management) Rules 2016; plastic waste covered under Plastic Waste (Management) Rules, 2016;
4. Solid waste storage and disposal;

5. Discharge of untreated waste and effluents from industries, cities, towns, villages and other human settlements;
6. Any construction of permanent nature except for boat jetties within fifty metres from the mean high flood level observed in the past ten years calculated from the date of commencement of these rules;
7. Commercial mining, stone quarrying and crushing units
8. Commercial water extraction Establishment of large scale commercial livestock and poultry farms;
9. Reducing area/ capacity of the water body;
10. Feeding of fishes and migratory birds by the public;
11. Any type of poaching.

**Prohibited Activities in Catchment Area/Zone of Influence:-**

1. Discharge of untreated Solid/liquid waste and effluents;
2. Manufacture or/and handling or/and storage or/and disposal of construction and demolition waste covered under the Construction and Demolition Waste Management Rules, 2016; hazardous substances covered under the Manufacture, Storage and Import of Hazardous Chemical Rules, 1989 or the Rules for Manufacture, Use, Import, Export and Storage of Hazardous Microorganism Genetically Engineered organized or cells, 1989 or the Hazardous Waste (Management, Handling and Transboundary Movement) Rules, 2008; electronic waste covered under the E-Waste (Management) Rules 2016; plastic waste covered under Plastic Waste (Management) Rules, 2016;
3. Extraction of commercial water including groundwater.
4. Any type of poaching;

**Schedule-III**

**Regulated Activities in Dorai Dam Wetland:-**

1. Fisheries;
2. Plying of boats;
3. Desilting;
4. Construction of temporary structures;
5. Water extraction for certain purposes.

**Regulated Activities in Catchment Area/Zone of Influence:-**

1. Conversion of land for any type of construction;
2. Setting up of any new industries and expansion of existing industries;
3. Mining.

[F.No.6 (3) Env/2023]

**By order of the Governor,**

Shikhar Agrawal,  
**Additional Chief Secretary to the Government.**

---

**Government Central Press, Jaipur.**