 सत्यमेव जयते	<b>राजस्थान राजपत्र</b> <b>विशेषांक</b>	<b>RAJASTHAN GAZETTE</b> <b>Extraordinary</b>
	<b>साधिकार प्रकाशित</b>	<b>Published by Authority</b>
	वैशाख 04, सोमवार, शाके 1945-अप्रैल 24, 2023 <i>Vaisakha 04, Monday, Saka 1945- April 24, 2023</i>	

भाग 4 (ग)

उप-खण्ड(II)

राज्य सरकार तथा अन्य राज्य प्राधिकारियों द्वारा जारी किये गये कानूनी आदेश तथा अधिसूचनाएं।

**Department of Environment and Climate Change**

Notification

**Jaipur, March 21, 2023**

**S.O.49** .- The following draft of the notification, which the State Government proposes to issue in exercise of the powers conferred by rule 7 of the Wetland (Conservation and Management) Rules, 2017 read with Environment (Protection) Act, 1986 (Central Act No. 29 of 1986), is hereby published for the information of the persons likely to be concerned or affected thereby and notice is hereby given to them that the said draft notification shall be taken into consideration after the expiry of a period of sixty days from the date on which copies of this notification as published in the Official Gazette are made available to the public.

Any person interested in making any objection or suggestion on the proposals contained in the draft notification may forward the same in writing for consideration to the State Government within the period of 60 days as specified above to the Director cum Joint Secretary, Department of Environment and Climate Change Room No. 8240 SSO Building, Government Secretariat, Jaipur, Rajasthan or at env\_raj@yahoo.co.in.

**Draft Notification**

WHEREAS, the Utawali wetland, situated in Utawali village of Chipabadod Tehsil in Baran district of Rajasthan, is considered to be critically significant for its ecosystem services and biodiversity values for the local communities and society at large;

AND WHEREAS, it is considered that for sustaining the said values, the ecological character of wetland ecosystem needs to be maintained by regulating developmental activities within the wetland as well as within its zone of influence;

NOW THEREFORE, the State Government declares that the Utawali wetland shall be covered under the provisions of the Wetlands (Conservation and Management) Rules, 2017 and notifies that,-

- (i) the extent of the wetland /wetland complex and its zone of influence shall be as described in Schedule-I of this notification;
- (ii) the activities prohibited within the wetland and its zone of influence shall be as listed in Schedule-II of this notification;
- (iii) the activities regulated within the wetland and its zone of influence, i.e. permitted only with permission of the State Government shall be as listed in Schedule-III of this notification. Request for permission for regulated activities may be made to the District Environment Committee headed by the District Collector; and

- (iv) the State Wetland Authority, Rajasthan shall monitor the enforcement of the provisions of this notification.

### Schedule-I

Utawali Dam Wetland Complex comprising of total area of 192.89 Hectare within the following boundary delineation:-

The geo-coordinates of Utawali Dam Wetland of Baran, Rajasthan

#### Utawali Dam

S. no	Latitude	Longitude	S. no	Latitude	Longitude	S. no	Latitude	Longitude
1	24.60970027480	76.74674377050	42	24.59677815070	76.75001412550	83	24.59666095510	76.74189077860
2	24.60907514300	76.74646292550	43	24.59661598640	76.74915582510	84	24.59707256420	76.74240624860
3	24.60921949310	76.74713057310	44	24.59583288110	76.74906027940	85	24.59795258400	76.74221571930
4	24.60874381860	76.74732932620	45	24.59573960320	76.74851476410	86	24.59881487390	76.74225865590
5	24.60831020700	76.74653857740	46	24.59634554650	76.74799162900	87	24.59957615160	76.74258637460
6	24.60845747740	76.74556943670	47	24.59674994970	76.747144425730	88	24.60016042170	76.74187058230
7	24.60858419010	76.74460205350	48	24.59763727900	76.74699778180	89	24.60104150850	76.74204343620
8	24.60788910810	76.74419712650	49	24.59808212540	76.74627451260	90	24.60186895240	76.74207850950
9	24.60762943110	76.74503895050	50	24.59737367140	76.74664094580	91	24.60261207480	76.74164947590
10	24.60782650540	76.74597528650	51	24.59657354430	76.74666079770	92	24.60334324350	76.74213937590
11	24.60732935250	76.74618616910	52	24.59591995820	76.74638767900	93	24.60419488230	76.74205413410
12	24.60682425780	76.74545563900	53	24.59533372030	76.74695402330	94	24.60504807860	76.74200453180
13	24.60647307980	76.74555044830	54	24.59480707290	76.74687621600	95	24.60572208720	76.74262821150
14	24.60599669590	76.74617983090	55	24.59447117540	76.74693985010	96	24.60587103740	76.74194930220
15	24.60546689770	76.74555688710	56	24.59368939280	76.74679932780	97	24.60544242660	76.74108383930
16	24.60495837600	76.74493618300	57	24.59404609230	76.74596090850	98	24.60514217650	76.74016041010
17	24.60478000770	76.74432586710	58	24.59468333730	76.74539444910	99	24.60426420780	76.73995239030
18	24.60413434460	76.74486145710	59	24.59557842010	76.74552023030	100	24.60337039020	76.73995667300
19	24.60339951720	76.74526331500	60	24.59638147260	76.74524575730	101	24.60265920520	76.74054157050
20	24.60313160670	76.74620598640	61	24.59709292170	76.74579365280	102	24.60214465600	76.74043132360
21	24.60249967030	76.74653099650	62	24.59781547120	76.74530112950	103	24.60210160470	76.73965719990
22	24.60244839750	76.74581710570	63	24.59864865410	76.74503203330	104	24.60140827580	76.73943431870
23	24.60208811700	76.74521015400	64	24.59904619090	76.74450743930	105	24.60055111080	76.73930508400
24	24.60150221880	76.74479821230	65	24.59887269330	76.74360541350	106	24.59994443230	76.73883090630
25	24.60202017250	76.74419432740	66	24.59812893720	76.74331484330	107	24.60050222770	76.73809090150
26	24.60272106070	76.74366767260	67	24.59734800010	76.74310302360	108	24.60139345660	76.73798953610
27	24.60205744840	76.74313317730	68	24.59645674580	76.74299932590	109	24.60165635890	76.73883510910
28	24.60139068860	76.74376816270	69	24.59558114360	76.74315839450	110	24.60245427950	76.73884404590
29	24.60051376630	76.74367587060	70	24.59503239830	76.74266897950	111	24.60327811240	76.73862861910
30	24.60011345930	76.74451111540	71	24.59500358030	76.74205214980	112	24.60417247940	76.73873660940
31	24.59958024740	76.74530242310	72	24.59462103290	76.74123720140	113	24.60504917850	76.73858440910
32	24.59891169180	76.74592500010	73	24.59377106520	76.74105617760	114	24.60470931530	76.73799897950
33	24.59889492040	76.74690917670	74	24.59297849810	76.74063519400	115	24.60413613980	76.73771352760
34	24.59836840520	76.74766986890	75	24.59215254630	76.74038846260	116	24.60477600440	76.73718955150
35	24.59762984770	76.74770343050	76	24.59159599200	76.73997496080	117	24.60419337870	76.73654440200
36	24.59695969620	76.74762496400	77	24.59233896340	76.73969422870	118	24.60463851300	76.73593767120

37	24.59724348150	76.74852216690	78	24.59310424570	76.74019919950	119	24.60468624150	76.73505553330
38	24.59785100270	76.74917059210	79	24.59398179910	76.74039871790	120	24.60546334010	76.73485303940
39	24.59823927000	76.74995966430	80	24.59479368480	76.74061250300	121	24.60606496610	76.73470566070
40	24.59765156650	76.75018282270	81	24.59539390180	76.74134604930	122	24.60638150110	76.73379458120
41	24.59722124060	76.75079390590	82	24.59604396150	76.74201546660	123	24.60719116460	76.73343048060
124	24.60808460850	76.73349506180	135	24.61323192770	76.73362595220	146	24.61595823840	76.74360527830
125	24.60892366400	76.73356540630	136	24.61381015570	76.73438435520	147	24.61528936230	76.74411688650
126	24.60895600320	76.73264847820	137	24.61438311040	76.73514754330	148	24.61439162610	76.74422101240
127	24.60860045300	76.73174109120	138	24.61495606080	76.73591073820	149	24.61365206120	76.74466405410
128	24.60844144060	76.73082316320	139	24.61544648280	76.73673245050	150	24.61289225820	76.74480745590
129	24.60926405960	76.73060260310	140	24.61562013160	76.73769619730	151	24.61205187330	76.74507210020
130	24.60993926120	76.73122419900	141	24.61572360430	76.73867724590	152	24.61115946340	76.74518355290
131	24.61073525340	76.73090311940	142	24.61581739370	76.73965937860	153	24.61081681720	76.74590487380
132	24.61149363140	76.73135403740	143	24.61587265150	76.74064470760	154	24.61014641610	76.74602881060
133	24.61207306640	76.73211133670	144	24.61590324690	76.74163169690			
134	24.61265249840	76.73286864170	145	24.61593383580	76.74261868630			

Details of Catchment Area/Zone of Influence of Utawali Dam Wetland falling within the boundary limit of Baran, Rajasthan:-

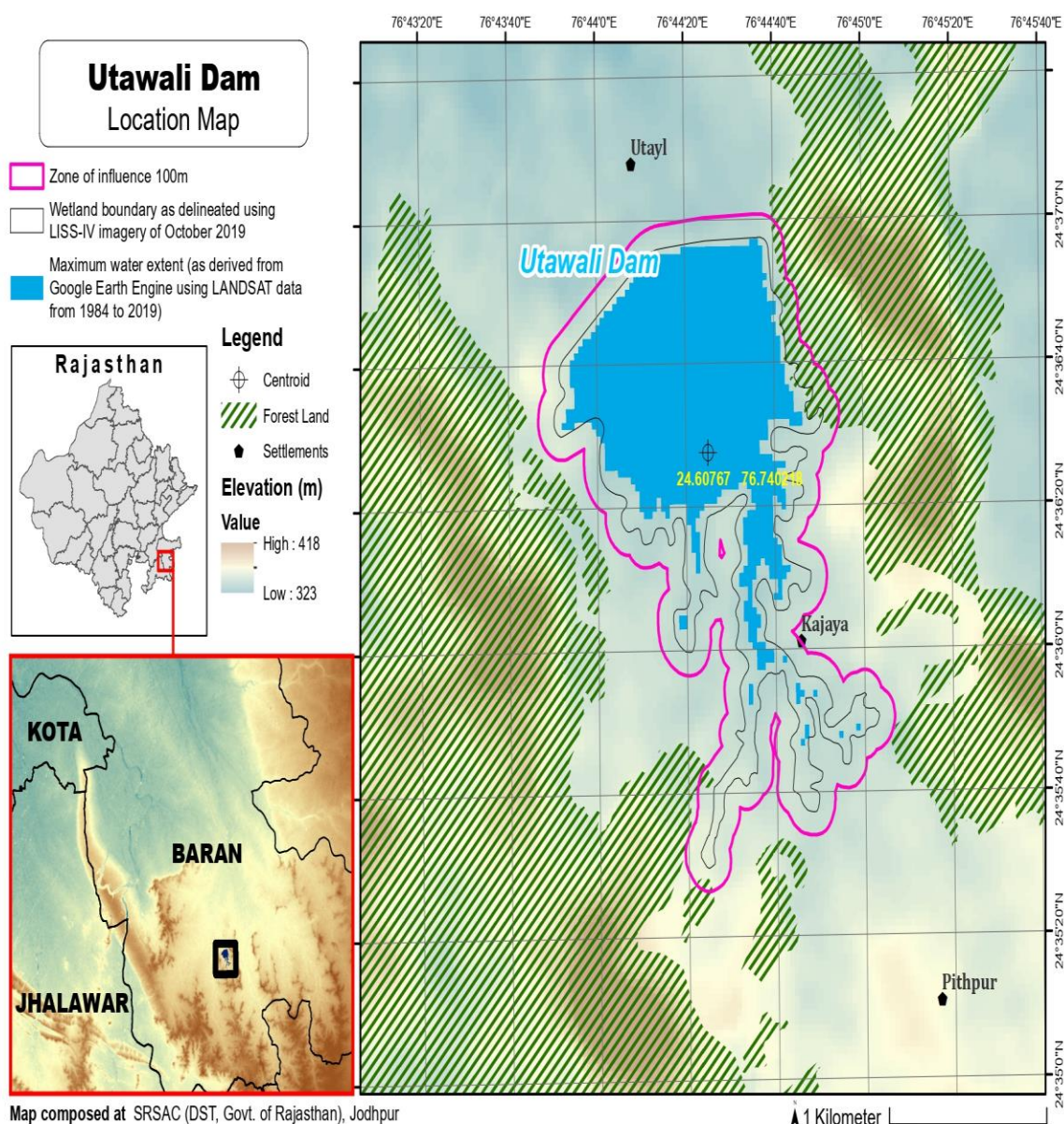
Total Area Of = 134.12

The geo-coordinates of Utawali Dam Wetland and its Zone of influence

S.no	Latitude	Longitude	S.no	Latitude	Longitude	S.no	Latitude	Longitude
1	24.60710607110	76.74731752530	43	24.59160673330	76.74141932550	85	24.61229063440	76.73085702630
2	24.60631584540	76.74716390810	44	24.59090121780	76.74085983380	86	24.61287007120	76.73161432890
3	24.60545555200	76.74697134320	45	24.59067311840	76.73992692700	87	24.61344950610	76.73237163640
4	24.60477252220	76.74638290080	46	24.59111116330	76.73909189350	88	24.61402893780	76.73312894980
5	24.60414533900	76.74595638720	47	24.59188769630	76.73862382730	89	24.61460603020	76.73388838780
6	24.60387801390	76.74689942900	48	24.59275205130	76.73881312080	90	24.61517898720	76.73465157880
7	24.60323931910	76.74754989800	49	24.59352422920	76.73931472840	91	24.61575731650	76.73540968930
8	24.60234926100	76.74753502120	50	24.59441676290	76.73941068640	92	24.61623670410	76.73624250630
9	24.60160461550	76.74699549010	51	24.59526924570	76.73967838810	93	24.61648471450	76.73718856150
10	24.60125424030	76.74611883780	52	24.59585130960	76.74042408010	94	24.61657895310	76.73817046570
11	24.60067553520	76.74540516550	53	24.59651451690	76.74084476540	95	24.61668223090	76.73915154480
12	24.60007883970	76.74614275440	54	24.59735773720	76.74105883560	96	24.61676018860	76.74013536900
13	24.59979752120	76.74699113670	55	24.59814551790	76.74114927090	97	24.61679078670	76.74112236540
14	24.59946913480	76.74790128330	56	24.59902715330	76.74126682560	98	24.61682137840	76.74210936190
15	24.59879399670	76.74854609630	57	24.59974738270	76.74098556930	99	24.61685196360	76.74309635840
16	24.59904381710	76.74936355770	58	24.60062762950	76.74097212780	100	24.61677626330	76.74407187740
17	24.59908580420	76.75032386760	59	24.60114292830	76.74060795820	101	24.61622346010	76.74483147830
18	24.59845385140	76.75098869080	60	24.60035895910	76.74029878020	102	24.61536728490	76.74510079130
19	24.59786073700	76.75170326880	61	24.59950963690	76.73999177450	103	24.61446958060	76.74520524580
20	24.59698204260	76.75174739320	62	24.59904682880	76.73918160970	104	24.61378131900	76.74581095740
21	24.59625724610	76.75119534430	63	24.59918668010	76.73822246850	105	24.61289589270	76.74591361470
22	24.59581492430	76.75035621750	64	24.59974916410	76.73745957310	106	24.61202112630	76.74607494350
23	24.59514116830	76.74987506460	65	24.60056051800	76.73705544400	107	24.61143942890	76.74675583530
24	24.59461043960	76.74910619080	66	24.60145882670	76.73700452340	108	24.61084239680	76.74737224270

25	24.59470071640	76.74815625990	67	24.60223933530	76.73743986220	109	24.61008620000	76.74784576850
26	24.59382747980	76.74799337330	68	24.60300365770	76.73759677330	110	24.60940171720	76.74844214490
27	24.59304083220	76.74753659730	69	24.60334495760	76.73690218220	111	24.60852341200	76.74830822290
28	24.59277928810	76.74661796570	70	24.60327569650	76.73593202170	112	24.60363840850	76.74094938990
29	24.59303346650	76.74568549520	71	24.60373637470	76.73512377000	113	24.60422567230	76.74095103910
30	24.59367762080	76.74501303740	72	24.60412193580	76.73425569140			
31	24.59436510620	76.74442581060	73	24.60490119710	76.73378574440			
32	24.59526227610	76.74447612150	74	24.60556552100	76.73334373710			
33	24.59610196240	76.74427352850	75	24.60623258750	76.73269432660			
34	24.59697494670	76.74443609260	76	24.60709728260	76.73244671300			
35	24.59727854610	76.74423151430	77	24.60784450970	76.73233308760			
36	24.59643296540	76.74401092360	78	24.60751187760	76.73141511530			
37	24.5955241160	76.74414587980	79	24.60758996250	76.73045561960			
38	24.59468289260	76.74395120040	80	24.60821576570	76.72976490040			
39	24.59409393570	76.74322118160	81	24.60908936320	76.72958367360			
40	24.59382157830	76.74231030660	82	24.60994525110	76.72986027790			
41	24.59326888980	76.74193182970	83	24.61078438340	76.72991477620			
42	24.59247283750	76.74148465790	84	24.61164442580	76.73017753220			

The detailed Map of **Utawali Dam Wetland** and its Zone of Influence is annexed herewith as Schedule-I ('A').



## Schedule-II

### Prohibited Activities in Utawali Wetland :-

1. Conversion for non wetland uses including encroachments of any kind;
2. Setting up of any new industry and expansion of existing industries;
3. Manufacture or/and handling or/and storage or/and disposal of construction and demolition waste covered under the Construction and Demolition Waste Management Rules, 2016; hazardous substances covered under the Manufacture, Storage and Import of Hazardous Chemical Rules, 1989 or the Rules for Manufacture, Use, Import, Export and Storage of Hazardous Microorganism Genetically Engineered organized or cells, 1989 or the Hazardous Waste (Management, Handling and Transboundary Movement) Rules, 2008; electronic waste covered under the E-Waste (Management) Rules 2016; plastic waste covered under Plastic Waste (Management) Rules, 2016;

4. Solid waste storage and disposal;
5. Discharge of untreated waste and effluents from industries, cities, towns, villages and other human settlements;
6. Any construction of permanent nature except for boat jetties within fifty metres from the mean high flood level observed in the past ten years calculated from the date of commencement of these rules;
7. Commercial mining, stone quarrying and crushing units
8. Commercial water extraction Establishment of large scale commercial livestock and poultry farms;
9. Reducing area/ capacity of the water body;
10. Feeding of fishes and migratory birds by the public;
11. Any type of poaching.

**Prohibited Activities in Catchment Area/Zone of Influence :-**

1. Discharge of untreated Solid/liquid waste and effluents;
2. Manufacture or/and handling or/and storage or/and disposal of construction and demolition waste covered under the Construction and Demolition Waste Management Rules, 2016; hazardous substances covered under the Manufacture, Storage and Import of Hazardous Chemical Rules, 1989 or the Rules for Manufacture, Use, Import, Export and Storage of Hazardous Microorganism Genetically Engineered organized or cells, 1989 or the Hazardous Waste (Management, Handling and Transboundary Movement) Rules, 2008; electronic waste covered under the E-Waste (Management) Rules 2016; plastic waste covered under Plastic Waste (Management) Rules, 2016;
3. Extraction of commercial water including groundwater.
4. Any type of poaching;

**Schedule-III**

**Regulated Activities in Utawali Wetland :-**

1. Fisheries;
2. Plying of boats;
3. Desilting;
4. Construction of temporary structures;
5. Water extraction for certain purposes.

**Regulated Activities in Catchment Area/Zone of Influence :-**

1. Conversion of land for any type of construction;
2. Setting up of any new industries and expansion of existing industries;
3. Mining.

[F.No.6 (3) Env/2023]  
By order of the Governor,

Shikhar Agrawal,  
Additional Chief Secretary to the Government.

---

Government Central Press, Jaipur.