



सत्यमेव जयते

राजस्थान राजपत्र
विशेषांक

साधिकार प्रकाशित

RAJASTHAN GAZETTE
Extraordinary

Published by Authority

चैत्र 29, बुधवार, शाके 1945-अप्रैल 19, 2023
Chaitra 29, Wednesday, Saka 1945- April 19, 2023

भाग 4 (ग)

उप-खण्ड(II)

राज्य सरकार तथा अन्य राज्य प्राधिकारियों द्वारा जारी किये गये कानूनी आदेश तथा
अधिसूचनाएं।

Department of Environment and Climate Change

Notification

Jaipur, March 21, 2023

S.O.15 .-The following draft of the notification, which the State Government proposes to issue in exercise of the powers conferred by rule 7 of the Wetland (Conservation and Management) Rules, 2017 read with Environment (Protection) Act, 1986 (Central Act No. 29 of 1986), is hereby published for the information of the persons likely to be concerned or affected thereby and notice is hereby given to them that the said draft notification shall be taken into consideration after the expiry of a period of sixty days from the date on which copies of this notification as published in the Official Gazette are made available to the public.

Any person interested in making any objection or suggestion on the proposals contained in the draft notification may forward the same in writing for consideration to the State Government within the period of 60 days as specified above to the Director cum Joint Secretary, Department of Environment and Climate Change Room No. 8240 SSO Building, Government Secretariat, Jaipur, Rajasthan or at env_raj@yahoo.co.in.

Draft Notification

WHEREAS, the Budh Sagar wetland, situated in Bassi village of Todarai Singh Tehsil in Tonk district of Rajasthan, is considered to be critically significant for its ecosystem services and biodiversity values for the local communities and society at large;

AND WHEREAS, it is considered that for sustaining the said values, the ecological character of wetland ecosystem needs to be maintained by regulating developmental activities within the wetland as well as within its zone of influence;

NOW THEREFORE, the State Government declares that the Budh Sagar wetland shall be covered under the provisions of the Wetlands (Conservation and Management) Rules, 2017 and notifies that,-

- (i) the extent of the wetland /wetland complex and its zone of influence shall be as described in Schedule-I of this notification;
- (ii) the activities prohibited within the wetland and its zone of influence shall be as listed in Schedule-II of this notification;
- (iii) the activities regulated within the wetland and its zone of influence, i.e. permitted only with permission of the State Government shall be as listed in Schedule-III of this notification. Request for permission for regulated activities may be made to the District Environment Committee headed by the District Collector; and

- (iv) the State Wetland Authority, Rajasthan shall monitor the enforcement of the provisions of this notification.

Schedule-I

Budhsagar Wetland comprising of total area of area of 8.1 Hectare

The geo- coordinates of Budhsagar Wetland, Tonk, Rajasthan

Budhsagar Wetland, Tehsil-TodaRaisingh, District-Tonk					
S.NO.	Longitude	Latitude	S.NO.	Longitude	Latitude
1	75° 29' 26.225" E	26° 0' 44.425" N	69	75° 29' 19.510" E	26° 1' 12.534" N
2	75° 29' 26.158" E	26° 0' 45.554" N	70	75° 29' 19.480" E	26° 1' 12.651" N
3	75° 29' 25.692" E	26° 0' 48.005" N	71	75° 29' 19.374" E	26° 1' 12.851" N
4	75° 29' 25.571" E	26° 0' 48.702" N	72	75° 29' 19.269" E	26° 1' 13.182" N
5	75° 29' 25.127" E	26° 0' 49.469" N	73	75° 29' 19.064" E	26° 1' 13.410" N
6	75° 29' 24.921" E	26° 0' 50.286" N	74	75° 29' 18.730" E	26° 1' 13.658" N
7	75° 29' 24.628" E	26° 0' 50.692" N	75	75° 29' 18.456" E	26° 1' 13.776" N
8	75° 29' 24.420" E	26° 0' 51.114" N	76	75° 29' 18.297" E	26° 1' 13.983" N
9	75° 29' 24.308" E	26° 0' 51.596" N	77	75° 29' 18.185" E	26° 1' 14.527" N
10	75° 29' 24.159" E	26° 0' 52.379" N	78	75° 29' 18.043" E	26° 1' 16.314" N
11	75° 29' 24.123" E	26° 0' 52.835" N	79	75° 29' 19.220" E	26° 1' 16.326" N
12	75° 29' 24.344" E	26° 0' 53.307" N	80	75° 29' 19.328" E	26° 1' 16.212" N
13	75° 29' 24.508" E	26° 0' 53.900" N	81	75° 29' 20.005" E	26° 1' 15.498" N
14	75° 29' 24.538" E	26° 0' 54.218" N	82	75° 29' 20.829" E	26° 1' 13.198" N
15	75° 29' 24.463" E	26° 0' 54.606" N	83	75° 29' 21.156" E	26° 1' 12.129" N
16	75° 29' 24.283" E	26° 0' 54.821" N	84	75° 29' 21.342" E	26° 1' 11.581" N
17	75° 29' 23.628" E	26° 0' 55.167" N	85	75° 29' 21.482" E	26° 1' 10.972" N
18	75° 29' 23.002" E	26° 0' 55.634" N	86	75° 29' 21.730" E	26° 1' 9.985" N
19	75° 29' 22.755" E	26° 0' 55.919" N	87	75° 29' 22.070" E	26° 1' 9.479" N
20	75° 29' 22.699" E	26° 0' 56.168" N	88	75° 29' 22.201" E	26° 1' 9.205" N
21	75° 29' 22.700" E	26° 0' 56.349" N	89	75° 29' 22.279" E	26° 1' 8.962" N
22	75° 29' 22.825" E	26° 0' 56.710" N	90	75° 29' 22.443" E	26° 1' 8.492" N
23	75° 29' 22.960" E	26° 0' 56.993" N	91	75° 29' 22.664" E	26° 1' 8.047" N
24	75° 29' 22.980" E	26° 0' 57.242" N	92	75° 29' 22.766" E	26° 1' 7.949" N
25	75° 29' 22.924" E	26° 0' 57.612" N	93	75° 29' 22.869" E	26° 1' 7.933" N
26	75° 29' 22.811" E	26° 0' 57.974" N	94	75° 29' 23.064" E	26° 1' 7.984" N
27	75° 29' 22.651" E	26° 0' 58.224" N	95	75° 29' 23.307" E	26° 1' 7.400" N
28	75° 29' 22.642" E	26° 0' 58.482" N	96	75° 29' 23.706" E	26° 1' 5.923" N
29	75° 29' 22.941" E	26° 0' 59.487" N	97	75° 29' 23.869" E	26° 1' 5.184" N
30	75° 29' 22.933" E	26° 0' 59.797" N	98	75° 29' 23.918" E	26° 1' 4.745" N
31	75° 29' 22.773" E	26° 1' 0.064" N	99	75° 29' 24.023" E	26° 1' 3.832" N
32	75° 29' 22.602" E	26° 1' 0.288" N	100	75° 29' 24.531" E	26° 1' 2.323" N
33	75° 29' 22.594" E	26° 1' 0.521" N	101	75° 29' 25.006" E	26° 1' 1.160" N
34	75° 29' 22.738" E	26° 1' 0.813" N	102	75° 29' 25.015" E	26° 1' 0.588" N
35	75° 29' 22.758" E	26° 1' 1.131" N	103	75° 29' 24.882" E	26° 1' 0.309" N
36	75° 29' 22.665" E	26° 1' 1.613" N	104	75° 29' 24.876" E	26° 1' 0.222" N
37	75° 29' 22.402" E	26° 1' 2.577" N	105	75° 29' 24.915" E	26° 1' 0.067" N
38	75° 29' 22.091" E	26° 1' 3.257" N	106	75° 29' 25.347" E	26° 0' 59.503" N
39	75° 29' 21.979" E	26° 1' 3.903" N	107	75° 29' 25.502" E	26° 0' 58.367" N
40	75° 29' 21.904" E	26° 1' 4.195" N	108	75° 29' 25.809" E	26° 0' 56.647" N
41	75° 29' 21.639" E	26° 1' 4.420" N	109	75° 29' 25.703" E	26° 0' 55.920" N
42	75° 29' 21.306" E	26° 1' 4.541" N	110	75° 29' 25.656" E	26° 0' 55.559" N
43	75° 29' 20.925" E	26° 1' 4.543" N	111	75° 29' 25.558" E	26° 0' 55.511" N
44	75° 29' 20.716" E	26° 1' 4.655" N	112	75° 29' 25.312" E	26° 0' 55.388" N
45	75° 29' 20.670" E	26° 1' 4.879" N	113	75° 29' 25.255" E	26° 0' 55.295" N
46	75° 29' 20.805" E	26° 1' 5.240" N	114	75° 29' 25.263" E	26° 0' 54.459" N
47	75° 29' 20.958" E	26° 1' 5.480" N	115	75° 29' 25.285" E	26° 0' 54.423" N
48	75° 29' 21.017" E	26° 1' 5.876" N	116	75° 29' 25.776" E	26° 0' 54.354" N
49	75° 29' 21.285" E	26° 1' 6.339" N	117	75° 29' 26.102" E	26° 0' 53.110" N

50	75° 29' 21.010" E	26° 1' 7.004" N	118	75° 29' 26.530" E	26° 0' 51.632" N
51	75° 29' 20.754" E	26° 1' 7.775" N	119	75° 29' 27.055" E	26° 0' 50.077" N
52	75° 29' 20.459" E	26° 1' 8.196" N	120	75° 29' 27.083" E	26° 0' 49.855" N
53	75° 29' 20.300" E	26° 1' 8.444" N	121	75° 29' 27.143" E	26° 0' 49.164" N
54	75° 29' 20.226" E	26° 1' 8.906" N	122	75° 29' 27.220" E	26° 0' 48.658" N
55	75° 29' 20.001" E	26° 1' 9.746" N	123	75° 29' 27.453" E	26° 0' 48.187" N
56	75° 29' 20.177" E	26° 1' 9.972" N	124	75° 29' 27.644" E	26° 0' 48.022" N
57	75° 29' 20.299" E	26° 1' 10.055" N	125	75° 29' 27.629" E	26° 0' 47.387" N
58	75° 29' 20.315" E	26° 1' 10.220" N	126	75° 29' 27.636" E	26° 0' 46.248" N
59	75° 29' 20.254" E	26° 1' 10.275" N	127	75° 29' 27.755" E	26° 0' 43.269" N
60	75° 29' 20.125" E	26° 1' 10.296" N	128	75° 29' 28.446" E	26° 0' 38.308" N
61	75° 29' 20.049" E	26° 1' 10.351" N	129	75° 29' 28.403" E	26° 0' 38.128" N
62	75° 29' 20.088" E	26° 1' 10.496" N	130	75° 29' 27.988" E	26° 0' 38.026" N
63	75° 29' 20.142" E	26° 1' 10.633" N	131	75° 29' 27.675" E	26° 0' 38.182" N
64	75° 29' 20.051" E	26° 1' 10.860" N	132	75° 29' 27.299" E	26° 0' 40.647" N
65	75° 29' 19.884" E	26° 1' 10.978" N	133	75° 29' 26.834" E	26° 0' 42.146" N
66	75° 29' 19.604" E	26° 1' 11.357" N	134	75° 29' 26.594" E	26° 0' 42.753" N
67	75° 29' 19.470" E	26° 1' 12.073" N	135	75° 29' 26.410" E	26° 0' 43.295" N
68	75° 29' 19.501" E	26° 1' 12.204" N	136	75° 29' 26.225" E	26° 0' 44.425" N

Details of Catchment Area/Zone of influence of Budhsagar, Tonk, Rajasthan

S.no.	Type of catchment Area	Area in Hectare
1	Under Agricultural Use	26.9

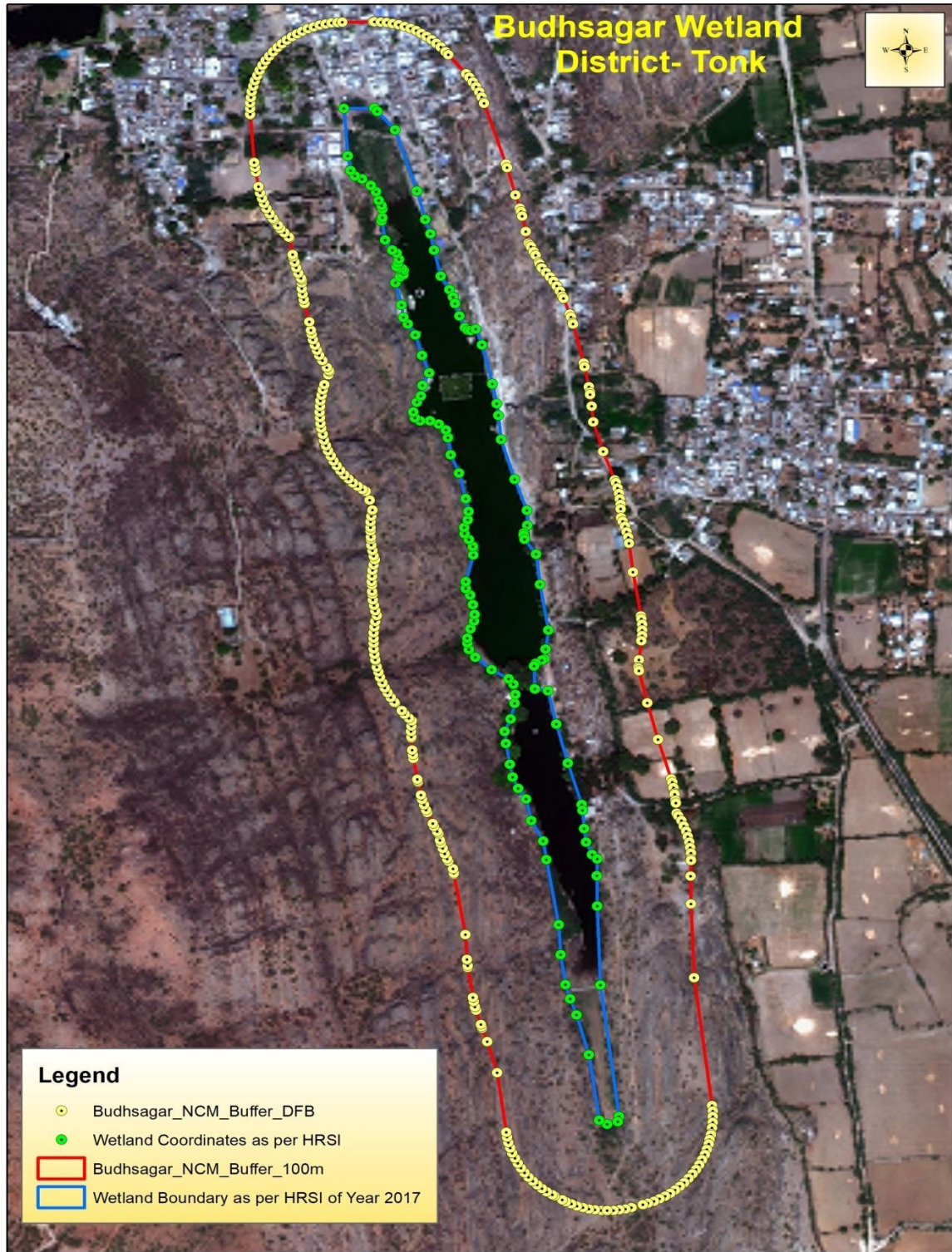
The geo- coordinates of zone of influence of Budhsagar, Tonk Rajasthan

S. No.	Latitude	Longitude	S. No.	Latitude	Longitude	S. No.	Latitude	Longitude
0	26° 0' 34.776" N	75° 29' 27.975" E	119	26° 1' 2.219" N	75° 29' 18.334" E	238	26° 1' 16.499" N	75° 29' 23.427" E
1	26° 0' 34.783" N	75° 29' 27.739" E	120	26° 1' 2.365" N	75° 29' 18.163" E	239	26° 1' 14.200" N	75° 29' 24.252" E
2	26° 0' 34.805" N	75° 29' 27.505" E	121	26° 1' 2.521" N	75° 29' 18.003" E	240	26° 1' 14.064" N	75° 29' 24.297" E
3	26° 0' 34.840" N	75° 29' 27.273" E	122	26° 1' 2.686" N	75° 29' 17.854" E	241	26° 1' 13.039" N	75° 29' 24.610" E
4	26° 0' 34.889" N	75° 29' 27.044" E	123	26° 1' 2.859" N	75° 29' 17.718" E	242	26° 1' 12.536" N	75° 29' 24.781" E
5	26° 0' 34.952" N	75° 29' 26.819" E	124	26° 1' 3.040" N	75° 29' 17.594" E	243	26° 1' 12.411" N	75° 29' 24.821" E
6	26° 0' 35.028" N	75° 29' 26.599" E	125	26° 1' 3.228" N	75° 29' 17.484" E	244	26° 1' 12.243" N	75° 29' 24.865" E
7	26° 0' 35.116" N	75° 29' 26.385" E	126	26° 1' 3.423" N	75° 29' 17.388" E	245	26° 1' 11.662" N	75° 29' 24.998" E
8	26° 0' 35.178" N	75° 29' 26.254" E	127	26° 1' 3.622" N	75° 29' 17.305" E	246	26° 1' 11.220" N	75° 29' 25.109" E
9	26° 0' 35.334" N	75° 29' 25.940" E	128	26° 1' 3.826" N	75° 29' 17.238" E	247	26° 1' 11.166" N	75° 29' 25.146" E
10	26° 0' 35.373" N	75° 29' 25.864" E	129	26° 1' 4.033" N	75° 29' 17.185" E	248	26° 1' 11.093" N	75° 29' 25.193" E
11	26° 0' 35.486" N	75° 29' 25.665" E	130	26° 1' 4.053" N	75° 29' 17.181" E	249	26° 1' 10.905" N	75° 29' 25.303" E
12	26° 0' 35.611" N	75° 29' 25.474" E	131	26° 1' 4.277" N	75° 29' 17.134" E	250	26° 1' 10.761" N	75° 29' 25.376" E
13	26° 0' 35.746" N	75° 29' 25.293" E	132	26° 1' 4.467" N	75° 29' 17.101" E	251	26° 1' 10.488" N	75° 29' 25.506" E
14	26° 0' 35.892" N	75° 29' 25.121" E	133	26° 1' 4.679" N	75° 29' 17.079" E	252	26° 1' 10.437" N	75° 29' 25.529" E
15	26° 0' 36.048" N	75° 29' 24.961" E	134	26° 1' 4.891" N	75° 29' 17.072" E	253	26° 1' 10.302" N	75° 29' 25.587" E
16	26° 0' 36.213" N	75° 29' 24.812" E	135	26° 1' 5.104" N	75° 29' 17.081" E	254	26° 1' 10.300" N	75° 29' 25.588" E
17	26° 0' 36.386" N	75° 29' 24.676" E	136	26° 1' 5.315" N	75° 29' 17.105" E	255	26° 1' 10.299" N	75° 29' 25.589" E
18	26° 0' 36.567" N	75° 29' 24.552" E	137	26° 1' 5.525" N	75° 29' 17.144" E	256	26° 1' 10.274" N	75° 29' 25.617" E
19	26° 0' 36.755" N	75° 29' 24.442" E	138	26° 1' 5.732" N	75° 29' 17.198" E	257	26° 1' 10.118" N	75° 29' 25.777" E
20	26° 0' 36.949" N	75° 29' 24.346" E	139	26° 1' 5.919" N	75° 29' 17.261" E	258	26° 1' 9.953" N	75° 29' 25.926" E

21	26° 0' 37.149" N	75° 29' 24.264" E	140	26° 1' 6.279" N	75° 29' 17.396" E	259	26° 1' 9.780" N	75° 29' 26.062" E
22	26° 0' 37.353" N	75° 29' 24.196" E	141	26° 1' 6.296" N	75° 29' 17.402" E	260	26° 1' 9.599" N	75° 29' 26.186" E
23	26° 0' 37.560" N	75° 29' 24.144" E	142	26° 1' 6.412" N	75° 29' 17.451" E	261	26° 1' 9.411" N	75° 29' 26.296" E
24	26° 0' 37.739" N	75° 29' 24.111" E	143	26° 1' 6.413" N	75° 29' 17.450" E	262	26° 1' 9.217" N	75° 29' 26.393" E
25	26° 0' 39.984" N	75° 29' 23.769" E	144	26° 1' 6.455" N	75° 29' 17.421" E	263	26° 1' 9.129" N	75° 29' 26.431" E
26	26° 0' 41.158" N	75° 29' 23.405" E	145	26° 1' 6.569" N	75° 29' 17.345" E	264	26° 1' 8.545" N	75° 29' 26.674" E
27	26° 0' 41.659" N	75° 29' 23.207" E	146	26° 1' 6.817" N	75° 29' 17.186" E	265	26° 1' 8.433" N	75° 29' 26.718" E
28	26° 0' 41.719" N	75° 29' 23.183" E	147	26° 1' 6.830" N	75° 29' 17.178" E	266	26° 1' 8.229" N	75° 29' 26.785" E
29	26° 0' 41.801" N	75° 29' 23.154" E	148	26° 1' 7.018" N	75° 29' 17.067" E	267	26° 1' 8.171" N	75° 29' 26.802" E
30	26° 0' 42.344" N	75° 29' 22.971" E	149	26° 1' 7.212" N	75° 29' 16.971" E	268	26° 1' 6.694" N	75° 29' 27.201" E
31	26° 0' 42.466" N	75° 29' 22.932" E	150	26° 1' 7.411" N	75° 29' 16.889" E	269	26° 1' 6.557" N	75° 29' 27.235" E
32	26° 0' 42.673" N	75° 29' 22.879" E	151	26° 1' 7.615" N	75° 29' 16.821" E	270	26° 1' 5.818" N	75° 29' 27.397" E
33	26° 0' 42.818" N	75° 29' 22.852" E	152	26° 1' 7.822" N	75° 29' 16.769" E	271	26° 1' 5.806" N	75° 29' 27.400" E
34	26° 0' 43.947" N	75° 29' 22.666" E	153	26° 1' 7.977" N	75° 29' 16.740" E	272	26° 1' 5.596" N	75° 29' 27.437" E
35	26° 0' 44.013" N	75° 29' 22.656" E	154	26° 1' 8.288" N	75° 29' 16.690" E	273	26° 1' 5.514" N	75° 29' 27.448" E
36	26° 0' 44.224" N	75° 29' 22.634" E	155	26° 1' 8.981" N	75° 29' 16.504" E	274	26° 1' 5.078" N	75° 29' 27.497" E
37	26° 0' 44.252" N	75° 29' 22.632" E	156	26° 1' 9.124" N	75° 29' 16.470" E	275	26° 1' 4.478" N	75° 29' 27.566" E
38	26° 0' 45.191" N	75° 29' 22.577" E	157	26° 1' 9.334" N	75° 29' 16.432" E	276	26° 1' 3.360" N	75° 29' 27.942" E
39	26° 0' 47.454" N	75° 29' 22.147" E	158	26° 1' 9.545" N	75° 29' 16.410" E	277	26° 1' 2.286" N	75° 29' 28.381" E
40	26° 0' 47.501" N	75° 29' 22.138" E	159	26° 1' 9.758" N	75° 29' 16.403" E	278	26° 1' 2.194" N	75° 29' 28.417" E
41	26° 0' 47.669" N	75° 29' 22.109" E	160	26° 1' 9.867" N	75° 29' 16.406" E	279	26° 1' 1.990" N	75° 29' 28.484" E
42	26° 0' 47.961" N	75° 29' 21.940" E	161	26° 1' 9.869" N	75° 29' 16.406" E	280	26° 1' 1.783" N	75° 29' 28.537" E
43	26° 0' 48.042" N	75° 29' 21.895" E	162	26° 1' 9.870" N	75° 29' 16.405" E	281	26° 1' 1.573" N	75° 29' 28.574" E
44	26° 0' 48.236" N	75° 29' 21.798" E	163	26° 1' 9.930" N	75° 29' 16.371" E	282	26° 1' 1.361" N	75° 29' 28.596" E
45	26° 0' 48.435" N	75° 29' 21.716" E	164	26° 1' 10.125" N	75° 29' 16.275" E	283	26° 1' 1.207" N	75° 29' 28.603" E
46	26° 0' 48.639" N	75° 29' 21.649" E	165	26° 1' 10.324" N	75° 29' 16.193" E	284	26° 1' 0.874" N	75° 29' 28.608" E
47	26° 0' 48.747" N	75° 29' 21.619" E	166	26° 1' 10.528" N	75° 29' 16.125" E	285	26° 1' 0.735" N	75° 29' 28.676" E
48	26° 0' 49.005" N	75° 29' 21.555" E	167	26° 1' 10.735" N	75° 29' 16.073" E	286	26° 1' 0.536" N	75° 29' 28.758" E
49	26° 0' 49.077" N	75° 29' 21.506" E	168	26° 1' 10.815" N	75° 29' 16.057" E	287	26° 1' 0.332" N	75° 29' 28.826" E
50	26° 0' 49.265" N	75° 29' 21.395" E	169	26° 1' 11.456" N	75° 29' 15.937" E	288	26° 1' 0.125" N	75° 29' 28.878" E
51	26° 0' 49.371" N	75° 29' 21.340" E	170	26° 1' 11.486" N	75° 29' 15.903" E	289	26° 0' 59.915" N	75° 29' 28.916" E
52	26° 0' 49.793" N	75° 29' 21.133" E	171	26° 1' 11.642" N	75° 29' 15.743" E	290	26° 0' 59.901" N	75° 29' 28.918" E
53	26° 0' 49.881" N	75° 29' 21.091" E	172	26° 1' 11.807" N	75° 29' 15.594" E	291	26° 0' 58.825" N	75° 29' 29.065" E
54	26° 0' 50.080" N	75° 29' 21.009" E	173	26° 1' 11.922" N	75° 29' 15.501" E	292	26° 0' 57.165" N	75° 29' 29.361" E
55	26° 0' 50.284" N	75° 29' 20.942" E	174	26° 1' 12.129" N	75° 29' 15.342" E	293	26° 0' 57.060" N	75° 29' 29.378" E
56	26° 0' 50.445" N	75° 29' 20.900" E	175	26° 1' 12.187" N	75° 29' 15.298" E	294	26° 0' 56.848" N	75° 29' 29.400" E
57	26° 0' 50.927" N	75° 29' 20.787" E	176	26° 1' 12.368" N	75° 29' 15.175" E	295	26° 0' 56.635" N	75° 29' 29.407" E
58	26° 0' 50.974" N	75° 29' 20.777" E	177	26° 1' 12.556" N	75° 29' 15.065" E	296	26° 0' 56.423" N	75° 29' 29.398" E
59	26° 0' 51.045" N	75° 29' 20.762" E	178	26° 1' 12.750" N	75° 29' 14.968" E	297	26° 0' 56.224" N	75° 29' 29.376" E
60	26° 0' 51.828" N	75° 29' 20.613" E	179	26° 1' 12.950" N	75° 29' 14.886" E	298	26° 0' 55.518" N	75° 29' 29.273" E
61	26° 0' 51.967" N	75° 29' 20.590" E	180	26° 1' 13.154" N	75° 29' 14.819" E	299	26° 0' 55.242" N	75° 29' 29.237" E

62	26° 0' 52.146" N	75° 29' 20.571" E	181	26° 1' 13.361" N	75° 29' 14.766" E	300	26° 0' 55.241" N	75° 29' 29.238" E
63	26° 0' 52.602" N	75° 29' 20.534" E	182	26° 1' 13.389" N	75° 29' 14.760" E	301	26° 0' 55.184" N	75° 29' 29.255" E
64	26° 0' 52.634" N	75° 29' 20.532" E	183	26° 1' 13.933" N	75° 29' 14.648" E	302	26° 0' 55.103" N	75° 29' 29.277" E
65	26° 0' 52.847" N	75° 29' 20.525" E	184	26° 1' 14.115" N	75° 29' 14.617" E	303	26° 0' 53.896" N	75° 29' 29.594" E
66	26° 0' 53.060" N	75° 29' 20.534" E	185	26° 1' 14.295" N	75° 29' 14.597" E	304	26° 0' 52.518" N	75° 29' 29.992" E
67	26° 0' 53.252" N	75° 29' 20.556" E	186	26° 1' 16.082" N	75° 29' 14.455" E	305	26° 0' 51.025" N	75° 29' 30.496" E
68	26° 0' 53.344" N	75° 29' 20.448" E	187	26° 1' 16.114" N	75° 29' 14.453" E	306	26° 0' 50.907" N	75° 29' 30.533" E
69	26° 0' 53.500" N	75° 29' 20.288" E	188	26° 1' 16.326" N	75° 29' 14.446" E	307	26° 0' 50.699" N	75° 29' 30.586" E
70	26° 0' 53.632" N	75° 29' 20.167" E	189	26° 1' 16.539" N	75° 29' 14.454" E	308	26° 0' 50.489" N	75° 29' 30.624" E
71	26° 0' 53.916" N	75° 29' 19.921" E	190	26° 1' 16.751" N	75° 29' 14.478" E	309	26° 0' 50.441" N	75° 29' 30.630" E
72	26° 0' 53.949" N	75° 29' 19.893" E	191	26° 1' 16.960" N	75° 29' 14.518" E	310	26° 0' 50.219" N	75° 29' 30.658" E
73	26° 0' 54.123" N	75° 29' 19.757" E	192	26° 1' 17.167" N	75° 29' 14.572" E	311	26° 0' 50.109" N	75° 29' 30.669" E
74	26° 0' 54.304" N	75° 29' 19.633" E	193	26° 1' 17.371" N	75° 29' 14.641" E	312	26° 0' 49.730" N	75° 29' 30.702" E
75	26° 0' 54.492" N	75° 29' 19.523" E	194	26° 1' 17.570" N	75° 29' 14.725" E	313	26° 0' 49.636" N	75° 29' 30.766" E
76	26° 0' 54.686" N	75° 29' 19.426" E	195	26° 1' 17.763" N	75° 29' 14.823" E	314	26° 0' 49.448" N	75° 29' 30.876" E
77	26° 0' 54.885" N	75° 29' 19.344" E	196	26° 1' 17.950" N	75° 29' 14.934" E	315	26° 0' 49.254" N	75° 29' 30.972" E
78	26° 0' 55.089" N	75° 29' 19.277" E	197	26° 1' 18.130" N	75° 29' 15.060" E	316	26° 0' 49.055" N	75° 29' 31.055" E
79	26° 0' 55.272" N	75° 29' 19.230" E	198	26° 1' 18.303" N	75° 29' 15.197" E	317	26° 0' 48.851" N	75° 29' 31.122" E
80	26° 0' 55.522" N	75° 29' 19.174" E	199	26° 1' 18.467" N	75° 29' 15.347" E	318	26° 0' 48.644" N	75° 29' 31.175" E
81	26° 0' 55.546" N	75° 29' 19.168" E	200	26° 1' 18.621" N	75° 29' 15.509" E	319	26° 0' 48.434" N	75° 29' 31.212" E
82	26° 0' 55.756" N	75° 29' 19.131" E	201	26° 1' 18.766" N	75° 29' 15.681" E	320	26° 0' 48.222" N	75° 29' 31.234" E
83	26° 0' 55.968" N	75° 29' 19.109" E	202	26° 1' 18.901" N	75° 29' 15.864" E	321	26° 0' 48.009" N	75° 29' 31.241" E
84	26° 0' 56.180" N	75° 29' 19.102" E	203	26° 1' 19.024" N	75° 29' 16.056" E	322	26° 0' 47.954" N	75° 29' 31.240" E
85	26° 0' 56.361" N	75° 29' 19.102" E	204	26° 1' 19.136" N	75° 29' 16.256" E	323	26° 0' 47.363" N	75° 29' 31.227" E
86	26° 0' 56.574" N	75° 29' 19.111" E	205	26° 1' 19.235" N	75° 29' 16.464" E	324	26° 0' 46.315" N	75° 29' 31.233" E
87	26° 0' 56.785" N	75° 29' 19.135" E	206	26° 1' 19.322" N	75° 29' 16.679" E	325	26° 0' 43.531" N	75° 29' 31.344" E
88	26° 0' 56.995" N	75° 29' 19.174" E	207	26° 1' 19.396" N	75° 29' 16.900" E	326	26° 0' 38.715" N	75° 29' 32.015" E
89	26° 0' 57.202" N	75° 29' 19.229" E	208	26° 1' 19.457" N	75° 29' 17.125" E	327	26° 0' 38.509" N	75° 29' 32.037" E
90	26° 0' 57.213" N	75° 29' 19.232" E	209	26° 1' 19.505" N	75° 29' 17.355" E	328	26° 0' 38.296" N	75° 29' 32.044" E
91	26° 0' 57.394" N	75° 29' 19.172" E	210	26° 1' 19.539" N	75° 29' 17.587" E	329	26° 0' 38.084" N	75° 29' 32.035" E
92	26° 0' 57.602" N	75° 29' 19.120" E	211	26° 1' 19.559" N	75° 29' 17.822" E	330	26° 0' 37.872" N	75° 29' 32.011" E
93	26° 0' 57.812" N	75° 29' 19.082" E	212	26° 1' 19.565" N	75° 29' 18.005" E	331	26° 0' 37.662" N	75° 29' 31.972" E
94	26° 0' 58.024" N	75° 29' 19.060" E	213	26° 1' 19.576" N	75° 29' 19.181" E	332	26° 0' 37.615" N	75° 29' 31.961" E
95	26° 0' 58.128" N	75° 29' 19.055" E	214	26° 1' 19.576" N	75° 29' 19.234" E	333	26° 0' 37.435" N	75° 29' 31.917" E
96	26° 0' 58.386" N	75° 29' 19.046" E	215	26° 1' 19.569" N	75° 29' 19.469" E	334	26° 0' 37.275" N	75° 29' 31.874" E
97	26° 0' 58.494" N	75° 29' 19.045" E	216	26° 1' 19.547" N	75° 29' 19.703" E	335	26° 0' 37.072" N	75° 29' 31.805" E
98	26° 0' 58.707" N	75° 29' 19.053" E	217	26° 1' 19.512" N	75° 29' 19.935" E	336	26° 0' 36.873" N	75° 29' 31.721" E
99	26° 0' 58.918" N	75° 29' 19.077" E	218	26° 1' 19.463" N	75° 29' 20.164" E	337	26° 0' 36.679" N	75° 29' 31.623" E
100	26° 0' 59.128" N	75° 29' 19.116" E	219	26° 1' 19.400" N	75° 29' 20.389" E	338	26° 0' 36.492" N	75° 29' 31.511" E
101	26° 0' 59.321" N	75° 29' 19.167" E	220	26° 1' 19.324" N	75° 29' 20.609" E	339	26° 0' 36.312" N	75° 29' 31.386" E
102	26° 0' 59.323" N	75° 29' 19.167" E	221	26° 1' 19.236" N	75° 29' 20.823" E	340	26° 0' 36.139" N	75° 29' 31.248" E

103	26° 0' 59.324" N	75° 29' 19.167" E	222	26° 1' 19.135" N	75° 29' 21.031" E	341	26° 0' 35.976" N	75° 29' 31.098" E
104	26° 0' 59.459" N	75° 29' 19.124" E	223	26° 1' 19.022" N	75° 29' 21.230" E	342	26° 0' 35.821" N	75° 29' 30.937" E
105	26° 0' 59.666" N	75° 29' 19.071" E	224	26° 1' 18.897" N	75° 29' 21.421" E	343	26° 0' 35.676" N	75° 29' 30.764" E
106	26° 0' 59.876" N	75° 29' 19.034" E	225	26° 1' 18.762" N	75° 29' 21.602" E	344	26° 0' 35.542" N	75° 29' 30.582" E
107	26° 1' 0.088" N	75° 29' 19.011" E	226	26° 1' 18.616" N	75° 29' 21.774" E	345	26° 0' 35.418" N	75° 29' 30.390" E
108	26° 1' 0.180" N	75° 29' 19.007" E	227	26° 1' 18.460" N	75° 29' 21.934" E	346	26° 0' 35.307" N	75° 29' 30.190" E
109	26° 1' 0.412" N	75° 29' 18.998" E	228	26° 1' 18.441" N	75° 29' 21.952" E	347	26° 0' 35.207" N	75° 29' 29.981" E
110	26° 1' 0.533" N	75° 29' 18.996" E	229	26° 1' 18.327" N	75° 29' 22.060" E	348	26° 0' 35.120" N	75° 29' 29.767" E
111	26° 1' 0.745" N	75° 29' 19.005" E	230	26° 1' 18.326" N	75° 29' 22.062" E	349	26° 0' 35.046" N	75° 29' 29.546" E
112	26° 1' 0.957" N	75° 29' 19.029" E	231	26° 1' 17.611" N	75° 29' 22.738" E	350	26° 0' 34.991" N	75° 29' 29.346" E
113	26° 1' 1.167" N	75° 29' 19.068" E	232	26° 1' 17.467" N	75° 29' 22.867" E	351	26° 0' 34.889" N	75° 29' 28.932" E
114	26° 1' 1.193" N	75° 29' 19.074" E	233	26° 1' 17.293" N	75° 29' 23.004" E	352	26° 0' 34.883" N	75° 29' 28.906" E
115	26° 1' 1.562" N	75° 29' 18.974" E	234	26° 1' 17.112" N	75° 29' 23.127" E	353	26° 0' 34.836" N	75° 29' 28.677" E
116	26° 1' 1.893" N	75° 29' 18.822" E	235	26° 1' 16.924" N	75° 29' 23.238" E	354	26° 0' 34.802" N	75° 29' 28.444" E
117	26° 1' 1.959" N	75° 29' 18.707" E	236	26° 1' 16.730" N	75° 29' 23.334" E	355	26° 0' 34.782" N	75° 29' 28.210" E
118	26° 1' 2.084" N	75° 29' 18.516" E	237	26° 1' 16.531" N	75° 29' 23.416" E	356	26° 0' 34.776" N	75° 29' 27.975" E



Schedule-II**Prohibited Activities in Budh Sagar Wetland :-**

1. Conversion for non wetland uses including encroachments of any kind;
2. Setting up of any new industry and expansion of existing industries;
3. Manufacture or/and handling or/and storage or/and disposal of construction and demolition waste covered under the Construction and Demolition Waste Management Rules, 2016; hazardous substances covered under the Manufacture, Storage and Import of Hazardous Chemical Rules, 1989 or the Rules for Manufacture, Use, Import, Export and Storage of Hazardous Microorganism Genetically Engineered organized or cells, 1989 or the Hazardous Waste (Management, Handling and Transboundary Movement) Rules, 2008; electronic waste covered under the E-Waste (Management) Rules 2016; plastic waste covered under Plastic Waste (Management) Rules, 2016;
4. Solid waste storage and disposal;
5. Discharge of untreated waste and effluents from industries, cities, towns, villages and other human settlements;
6. Any construction of permanent nature except for boat jetties within fifty metres from the mean high flood level observed in the past ten years calculated from the date of commencement of these rules;
7. Commercial mining, stone quarrying and crushing units
8. Commercial water extraction Establishment of large scale commercial livestock and poultry farms;
9. Reducing area/ capacity of the water body;
10. Feeding of fishes and migratory birds by the public;
11. Any type of poaching.

Prohibited Activities in Catchment Area/Zone of Influence :-

1. Discharge of untreated Solid/liquid waste and effluents;
2. Manufacture or/and handling or/and storage or/and disposal of construction and demolition waste covered under the Construction and Demolition Waste Management Rules, 2016; hazardous substances covered under the Manufacture, Storage and Import of Hazardous Chemical Rules, 1989 or the Rules for Manufacture, Use, Import, Export and Storage of Hazardous Microorganism Genetically Engineered organized or cells, 1989 or the Hazardous Waste (Management, Handling and Transboundary Movement) Rules, 2008; electronic waste covered under the E-Waste (Management) Rules 2016; plastic waste covered under Plastic Waste (Management) Rules, 2016;
3. Extraction of commercial water including groundwater.
4. Any type of poaching;

Schedule–III**Regulated Activities in Budh Sagar Wetland :-**

1. Fisheries;
2. Plying of boats;
3. Desilting;
4. Construction of temporary structures;
5. Water extraction for certain purposes.

Regulated Activities in Catchment Area/Zone of Influence :-

1. Conversion of land for any type of construction;
2. Setting up of any new industries and expansion of existing industries;
3. Mining.

[F.No.6 (3) Env/2023]

By order of the Governor,

Shikhar Agrawal,

Additional Chief Secretary to the Government.

Government Central Press, Jaipur.