 सत्यमेव जयते	राजस्थान राजपत्र विशेषांक	RAJASTHAN GAZETTE Extraordinary
	साधिकार प्रकाशित	Published by Authority
	चैत्र 29, बुधवार, शाके 1945-अप्रैल 19, 2023 <i>Chaitra 29, Wednesday, Saka 1945- April 19, 2023</i>	

भाग 4 (ग)

उप-खण्ड(II)

राज्य सरकार तथा अन्य राज्य प्राधिकारियों द्वारा जारी किये गये कानूनी आदेश तथा अधिसूचनाएं।

Department of Environment and Climate Change

Notification

Jaipur, March 21, 2023

S.O.18 .-The following draft of the notification, which the State Government proposes to issue in exercise of the powers conferred by rule 7 of the Wetland (Conservation and Management) Rules, 2017 read with Environment (Protection) Act, 1986 (Central Act No. 29 of 1986), is hereby published for the information of the persons likely to be concerned or affected thereby and notice is hereby given to them that the said draft notification shall be taken into consideration after the expiry of a period of sixty days from the date on which copies of this notification as published in the Official Gazette are made available to the public.

Any person interested in making any objection or suggestion on the proposals contained in the draft notification may forward the same in writing for consideration to the State Government within the period of 60 days as specified above to the Director cum Joint Secretary, Department of Environment and Climate Change Room No. 8240 SSO Building, Government Secretariat, Jaipur, Rajasthan or at env_raj@yahoo.co.in.

Draft Notification

WHEREAS, the Rewasa Wetland, situated in Rewasa Village Dataramgarh Tehsil in Sikar district of Rajasthan, is considered to be critically significant for its ecosystem services and biodiversity values for the local communities and society at large;

AND WHEREAS, it is considered that for sustaining the said values, the ecological character of wetland ecosystem needs to be maintained by regulating developmental activities within the wetland as well as within its zone of influence;

NOW THEREFORE, the State Government declares that the Rewasa wetland shall be covered under the provisions of the Wetlands (Conservation and Management) Rules, 2017 and notifies that,-

- (i) the extent of the wetland /wetland complex and its zone of influence shall be as described in Schedule-I of this notification;
- (ii) the activities prohibited within the wetland and its zone of influence shall be as listed in Schedule-II of this notification;
- (iii) the activities regulated within the wetland and its zone of influence, i.e. permitted only with permission of the State Government shall be as listed in Schedule-III of this notification. Request for permission for regulated activities may be made to the District Environment Committee headed by the District Collector; and

- (iv) the State Wetland Authority, Rajasthan shall monitor the enforcement of the provisions of this notification.

Schedule-I

Rewasa Wetland comprising of total area of 895.99 Hectare

The geo- coordinates of Rewasa, Sikar Rajasthan

Rewasa								
S. no	Latitude	Longitude	S. no	Latitude	Longitude	S. no	Latitude	Longitude
1	27.48801199780	75.22853632620	48	27.46039921350	75.23358011710	95	27.46713650980	75.21828978680
2	27.48713942740	75.22864757110	49	27.45952577210	75.23332414640	96	27.46800870870	75.21832044520
3	27.48629550280	75.22900078050	50	27.45863801700	75.23318791780	97	27.46886666910	75.21863158850
4	27.48595290050	75.22984673970	51	27.45773527430	75.23317706950	98	27.46958571920	75.21923351970
5	27.48603705340	75.23084969290	52	27.45683253150	75.23316622140	99	27.47041589210	75.21955516040
6	27.48643694680	75.23175002220	53	27.45593067640	75.23316291670	100	27.47131047540	75.21969135370
7	27.48699626960	75.23253583510	54	27.45506133310	75.23343584860	101	27.47220505850	75.21982754910
8	27.48735277030	75.23342855000	55	27.45419198910	75.23370877620	102	27.47301652690	75.21942792820
9	27.48729199940	75.23443543510	56	27.45329762900	75.23376915080	103	27.47382552910	75.21898100710
10	27.48688225090	75.23530771200	57	27.45256773820	75.23326103040	104	27.47466925930	75.21862091240
11	27.48629617830	75.23607726130	58	27.45189642760	75.23258438340	105	27.47551298840	75.21826081230
12	27.48568441870	75.23681806110	59	27.45122511350	75.23190774470	106	27.47636485520	75.21792671390
13	27.48495640560	75.23741669290	60	27.45046607390	75.23137067950	107	27.47722630340	75.21762548410
14	27.48422116620	75.23800406020	61	27.44967171960	75.23088980340	108	27.47811165230	75.21742746460
15	27.48348364770	75.23858787240	62	27.44882220810	75.23056002060	109	27.47900236780	75.21729385260
16	27.48277718140	75.23921718670	63	27.44795484260	75.23027931680	110	27.47990290680	75.21732807920
17	27.48213914990	75.23991275410	64	27.44716190860	75.22984451810	111	27.48078791530	75.21752800570
18	27.48175201860	75.24082721630	65	27.44647014250	75.22919430540	112	27.48167605640	75.21769450750
19	27.48109629130	75.24150887260	66	27.44604860950	75.22835686760	113	27.48257879800	75.21770523420
20	27.48037685400	75.24210896360	67	27.44609016460	75.22739164110	114	27.48347965670	75.21764783050
21	27.47954796420	75.24251006560	68	27.44641615840	75.22644798730	115	27.48435085280	75.21740577500
22	27.47870863330	75.24288079930	69	27.44680822020	75.22555314160	116	27.48521029280	75.21709585520
23	27.47785411500	75.24320736050	70	27.44745336000	75.22484525960	117	27.48609989160	75.21703750510
24	27.47696326980	75.24331644410	71	27.44811594620	75.22416209850	118	27.48699970580	75.21711048950
25	27.47606468990	75.24337264770	72	27.44887908530	75.22362143150	119	27.48786093310	75.21732225830
26	27.47526061660	75.24380843960	73	27.44964222230	75.22308075720	120	27.48851745370	75.21800753600
27	27.47437836740	75.24389974620	74	27.45038890700	75.22251302210	121	27.48908688450	75.21875681410
28	27.47351969820	75.24410871210	75	27.45111686240	75.22191448210	122	27.48993484340	75.21898051830
29	27.47261945230	75.24414420170	76	27.45184481520	75.22131593420	123	27.49083758370	75.21899125600
30	27.47173096330	75.24431631170	77	27.45262949550	75.22081862770	124	27.49174032380	75.21900199500
31	27.47084551800	75.24447826300	78	27.45329161540	75.22018205970	125	27.49264306390	75.21901273280
32	27.46997703790	75.24427887150	79	27.45399281050	75.21957018700	126	27.49354580380	75.21902347100
33	27.46945448150	75.24349952290	80	27.45479005520	75.21914576350	127	27.49440137980	75.21929396710
34	27.46911944040	75.24263910120	81	27.45567780880	75.21906868520	128	27.49516180960	75.21978958870
35	27.46872176890	75.24174005820	82	27.45657673290	75.21914420590	129	27.49563503130	75.22064221720
36	27.46824721580	75.24089085170	83	27.45747840060	75.21913317850	130	27.49595046610	75.22158123140
37	27.46765655910	75.24013298290	84	27.45836514920	75.21895293840	131	27.49593086470	75.22259232620

38	27.46706755470	75.23937122390	85	27.45919842000	75.21857891530	132	27.49574440470	75.22358288010
39	27.46644281300	75.23865836090	86	27.46003122230	75.21819011270	133	27.49523380830	75.22437389590
40	27.46565773380	75.23824495420	87	27.46075403280	75.21759111550	134	27.49445127790	75.22487584520
41	27.46546042170	75.23725731810	88	27.46147407240	75.21698135530	135	27.49366270820	75.22536872480
42	27.46509483310	75.23633241060	89	27.46232012180	75.21678332150	136	27.49328528370	75.22620635300
43	27.46446651010	75.23565595190	90	27.46304702370	75.21734078320	137	27.49252881790	75.22675889020
44	27.46369426720	75.23514422160	91	27.46378006370	75.21792146970	138	27.49173272520	75.22723293550
45	27.46282450370	75.23487296220	92	27.46457322450	75.21839784610	139	27.49095506330	75.22774585980
46	27.46202404910	75.23441967500	93	27.46543070590	75.21868972520	140	27.49030408500	75.22841146640
47	27.46124764450	75.23390322540	94	27.46633077280	75.21867956700	141	27.48943343000	75.22867915940

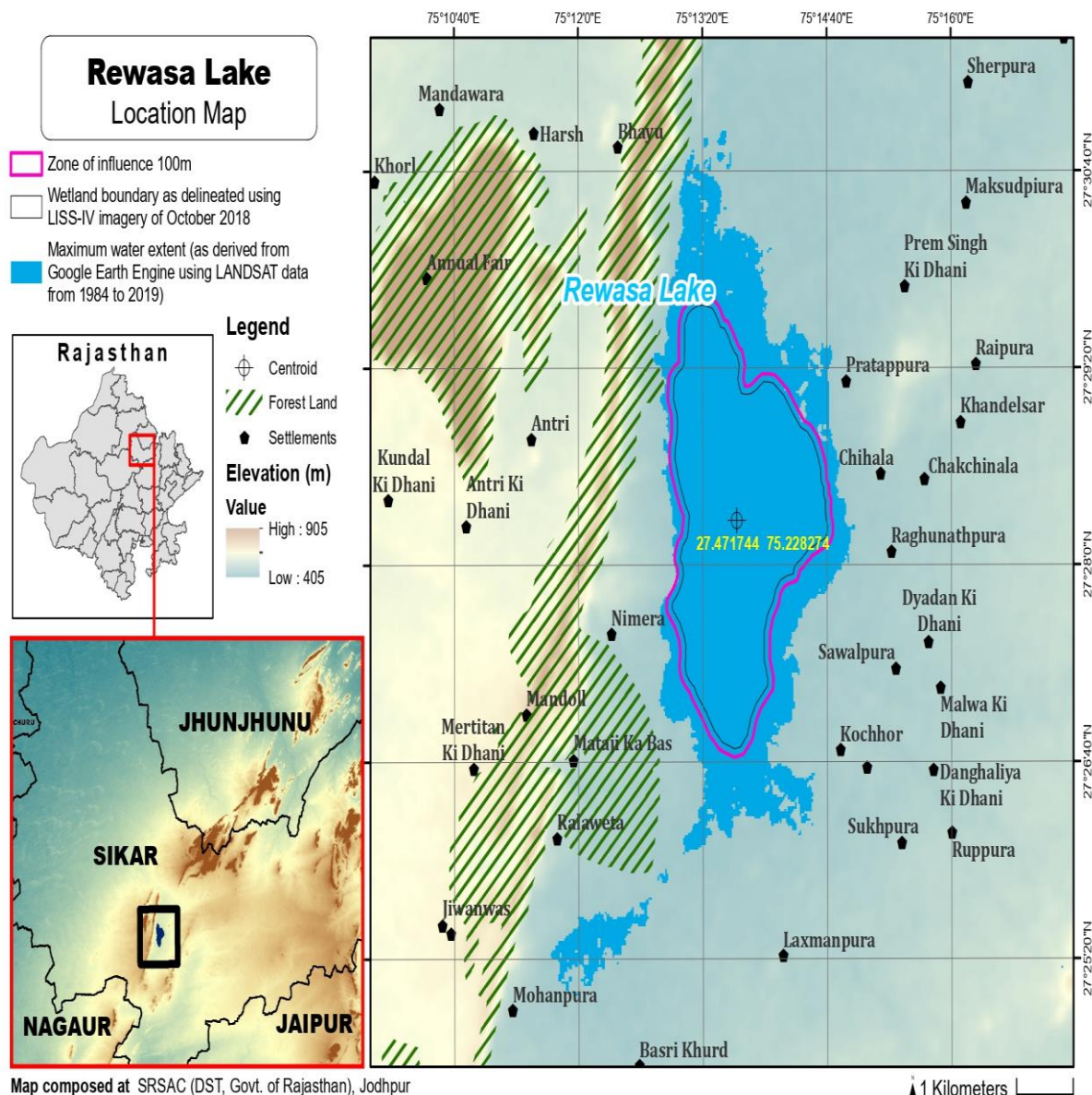
Details of Catchment Area/Zone of influence of Rewasa, Sikar, Rajasthan 144.54 Hectares

The geo- coordinates of zone of influence of Rewasa Sikar, Rajasthan

Rewasa Lake

S.no	Latitude	Longitude	S.no	Latitude	Longitude	S.no	Latitude	Longitude
1	27.48703340770	75.23087065740	50	27.45629347760	75.23417182220	99	27.47002540980	75.21834416510
2	27.48756462320	75.23167835280	51	27.45541597750	75.23437545720	100	27.47087731040	75.21860396460
3	27.48806479260	75.23252057630	52	27.45454663090	75.23464837470	101	27.47177189460	75.21874015060
4	27.48825506890	75.23348545250	53	27.45365952790	75.23478555600	102	27.47261168490	75.21852311480
5	27.48819975710	75.23449334770	54	27.45276303120	75.23471785590	103	27.47341895830	75.21807149200
6	27.48792706750	75.23544353770	55	27.45205340290	75.23410354860	104	27.47426268620	75.21771139170
7	27.48736963510	75.23623946280	56	27.45138209630	75.23342689970	105	27.47510641310	75.21735128590
8	27.48677477310	75.23700093380	57	27.45071078630	75.23275025900	106	27.47595628800	75.21701077400
9	27.48613207380	75.23770527680	58	27.44995345890	75.23221047160	107	27.47681572770	75.21670087310
10	27.48540405700	75.23830390510	59	27.44915910750	75.23172959180	108	27.47769774220	75.21648788010
11	27.48466777380	75.23888964920	60	27.44829411840	75.23144220590	109	27.47858331560	75.21629124680
12	27.48393025180	75.23947345770	61	27.44742592660	75.23116476780	110	27.47948543780	75.21628730090
13	27.48322962650	75.24011133480	62	27.44664853270	75.23068261590	111	27.48037887080	75.21640301960
14	27.48271454310	75.24091417200	63	27.44595677040	75.23003240120	112	27.48126388060	75.21660293960
15	27.48223617290	75.24175814160	64	27.44533791050	75.22931066280	113	27.48215966060	75.21668793950
16	27.48154442340	75.24240857650	65	27.44511492380	75.22833089860	114	27.48306152620	75.21666696650
17	27.48081711480	75.24299840960	66	27.44513793230	75.22734566050	115	27.48394385960	75.21648920210
18	27.47998822250	75.24339950650	67	27.44546392580	75.22640201460	116	27.48480329770	75.21617927630
19	27.47915241220	75.24378061370	68	27.44578991360	75.22545836340	117	27.48568231290	75.21600366420
20	27.47829789190	75.24410716930	69	27.44632829210	75.22466366320	118	27.48658423470	75.21604809410
21	27.47742053360	75.24430810640	70	27.44697342740	75.22395577900	119	27.48748147290	75.21615651980
22	27.47651852970	75.24435037980	71	27.44765187310	75.22329374850	120	27.48833059100	75.21644115320
23	27.47570073620	75.24473876150	72	27.44841500890	75.22275307780	121	27.48901799390	75.21709739650
24	27.47480813510	75.24481520640	73	27.44917814260	75.22221239970	122	27.48955670140	75.21789236350
25	27.47396215480	75.24512631270	74	27.44992276380	75.22164127340	123	27.49044116420	75.21797415060
26	27.47305941560	75.24511536750	75	27.45065071550	75.22104273010	124	27.49134390460	75.21798488090
27	27.47216492210	75.24524081450	76	27.45137866470	75.22044417900	125	27.49224664480	75.21799561090
28	27.47128644760	75.24547400970	77	27.45216501650	75.21994932310	126	27.49314938490	75.21800634070
29	27.47038487560	75.24548481160	78	27.45283165420	75.21929217010	127	27.49404963520	75.21804733660
30	27.46953333920	75.24516853900	79	27.45353653420	75.21867591000	128	27.49488731950	75.21842360470

31	27.46890834510	75.24448009810	80	27.45433241240	75.21822626590	129	27.49567783390	75.21889256120
32	27.46848141300	75.24358919500	81	27.45521440250	75.21803330510	130	27.49623463340	75.21968925350
33	27.46809160810	75.24269891750	82	27.45611225080	75.21810643340	131	27.49660630640	75.22061086100
34	27.46772417480	75.24177861590	83	27.45701365910	75.21813014090	132	27.49685339770	75.22157169640
35	27.46713276130	75.24102243010	84	27.45790737490	75.21802685890	133	27.49684271490	75.22258399780
36	27.46652810540	75.24027350230	85	27.45875360330	75.21769665480	134	27.49666826710	75.22357662640
37	27.46595273850	75.23950893910	86	27.45958709220	75.21730894240	135	27.49638115080	75.22452316680
38	27.46512133360	75.23912799980	87	27.46030430780	75.21670004780	136	27.49573226030	75.22522582660
39	27.46473244340	75.23824429340	88	27.46102855770	75.21609662760	137	27.49494710570	75.22572494530
40	27.46448296850	75.23727610930	89	27.46186047390	75.21573283920	138	27.49428336150	75.22632099870
41	27.46396310990	75.23649615170	90	27.46275357960	75.21584345710	139	27.49373735690	75.22708433180
42	27.46317167240	75.23603175490	91	27.46348062960	75.21642883170	140	27.49298088770	75.22763686520
43	27.46230265800	75.23575771630	92	27.46420456700	75.21702801840	141	27.49218510970	75.22811192030
44	27.46151790900	75.23525982270	93	27.46499808670	75.21750478890	142	27.49140649650	75.22862289620
45	27.46074150750	75.23474336960	94	27.46587358200	75.21768648730	143	27.49075508960	75.22930178680
46	27.45987373270	75.23447218430	95	27.46670535370	75.21739617000	144	27.48989028850	75.22958838470
47	27.45900029290	75.23421620780	96	27.46757835120	75.21718746140	145	27.48900840810	75.22974643230
48	27.45809896290	75.23419353490	97	27.46845065870	75.21741956570	146	27.48811765610	75.22958181720
49	27.45719622030	75.23418267850	98	27.46930350430	75.21774546390	147	27.48724378040	75.22967328560



Schedule-II

Prohibited Activities in Rewasa Wetland :-

1. Conversion for non wetland uses including encroachments of any kind;
2. Setting up of any new industry and expansion of existing industries;
3. Manufacture or/and handling or/and storage or/and disposal of construction and demolition waste covered under the Construction and Demolition Waste Management Rules, 2016; hazardous substances covered under the Manufacture, Storage and Import of Hazardous Chemical Rules, 1989 or the Rules for Manufacture, Use, Import, Export and Storage of Hazardous Microorganism Genetically Engineered organized or cells, 1989 or the Hazardous Waste (Management, Handling and Transboundary Movement) Rules, 2008; electronic

waste covered under the E-Waste (Management) Rules 2016; plastic waste covered under Plastic Waste (Management) Rules, 2016;

4. Solid waste storage and disposal;
5. Discharge of untreated waste and effluents from industries, cities, towns, villages and other human settlements;
6. Any construction of permanent nature except for boat jetties within fifty metres from the mean high flood level observed in the past ten years calculated from the date of commencement of these rules;
7. Commercial mining, stone quarrying and crushing units
8. Commercial water extraction Establishment of large scale commercial livestock and poultry farms;
9. Reducing area/ capacity of the water body;
10. Feeding of fishes and migratory birds by the public;
11. Any type of poaching.

Prohibited Activities in Catchment Area/Zone of Influence :-

1. Discharge of untreated Solid/liquid waste and effluents;
2. Manufacture or/and handling or/and storage or/and disposal of construction and demolition waste covered under the Construction and Demolition Waste Management Rules, 2016; hazardous substances covered under the Manufacture, Storage and Import of Hazardous Chemical Rules, 1989 or the Rules for Manufacture, Use, Import, Export and Storage of Hazardous Microorganism Genetically Engineered organized or cells, 1989 or the Hazardous Waste (Management, Handling and Transboundary Movement) Rules, 2008; electronic waste covered under the E-Waste (Management) Rules 2016; plastic waste covered under Plastic Waste (Management) Rules, 2016;
3. Extraction of commercial water including groundwater.
4. Any type of poaching;

Schedule-III

Regulated Activities in Rewasa Wetland :-

1. Fisheries;
2. Plying of boats;
3. Desilting;
4. Construction of temporary structures;
5. Water extraction for certain purposes.

Regulated Activities in Catchment Area/Zone of Influence :-

1. Conversion of land for any type of construction;
2. Setting up of any new industries and expansion of existing industries;
3. Mining.

[F.No.6 (3) Env/2023]

By order of the Governor,

Shikhar Agrawal,

Additional Chief Secretary to the Government.

—————
Government Central Press, Jaipur.