



सत्यमेव जयते

राजस्थान राजपत्र
विशेषांक

साधिकार प्रकाशित

RAJASTHAN GAZETTE
Extraordinary

Published by Authority

चैत्र 29, बुधवार, शाके 1945-अप्रैल 19, 2023
Chaitra 29, Wednesday, Saka 1945- April 19, 2023

भाग 4 (ग)

उप-खण्ड(II)

राज्य सरकार तथा अन्य राज्य प्राधिकारियों द्वारा जारी किये गये कानूनी आदेश तथा
अधिसूचनाएं।

Department of Environment and Climate Change

Notification

Jaipur, March 21, 2023

S.O.24 .- The following draft of the notification, which the State Government proposes to issue in exercise of the powers conferred by rule 7 of the Wetland (Conservation and Management) Rules, 2017 read with Environment (Protection) Act, 1986 (Central Act No. 29 of 1986), is hereby published for the information of the persons likely to be concerned or affected thereby and notice is hereby given to them that the said draft notification shall be taken into consideration after the expiry of a period of sixty days from the date on which copies of this notification as published in the Official Gazette are made available to the public.

Any person interested in making any objection or suggestion on the proposals contained in the draft notification may forward the same in writing for consideration to the State Government within the period of 60 days as specified above to the Director cum Joint Secretary, Department of Environment and Climate Change Room No. 8240 SSO Building, Government Secretariat, Jaipur, Rajasthan or at env_raj@yahoo.co.in.

Draft Notification

WHEREAS, the Didwana Wetland, situated in Didwana Village Didwana Tehsil in Nagaur district of Rajasthan, is considered to be critically significant for its ecosystem services and biodiversity values for the local communities and society at large;

AND WHEREAS, it is considered that for sustaining the said values, the ecological character of wetland ecosystem needs to be maintained by regulating developmental activities within the wetland as well as within its zone of influence;

NOW THEREFORE, the State Government declares that the Didwana wetland shall be covered under the provisions of the Wetlands (Conservation and Management) Rules, 2017 and notifies that,-

- (i) the extent of the wetland /wetland complex and its zone of influence shall be as described in Schedule-I of this notification;
- (ii) the activities prohibited within the wetland and its zone of influence shall be as listed in Schedule-II of this notification;
- (iii) the activities regulated within the wetland and its zone of influence, i.e. permitted only with permission of the State Government shall be as listed in Schedule-III of this notification. Request for permission for regulated activities may be made to the District Environment Committee headed by the District Collector; and

- (iv) the State Wetland Authority, Rajasthan shall monitor the enforcement of the provisions of this notification.

Schedule-I

Didwana (Khalda) Wetland comprising of total area of 1274.71 Hectare

The geo- coordinates of Didwana (Khalda), Nagaur, Rajasthan

Didwana

S.no	Latitude	Longitude	S.no	Latitude	Longitude	S.no	Latitude	Longitude
1	27.39129782	74.58730469	47	27.36145409	74.57172123	93	27.37056565	74.55083137
2	27.39062098	74.5879383	48	27.36069639	74.57121118	94	27.37134158	74.55131071
3	27.38987702	74.58847747	49	27.35987544	74.57083752	95	27.3721436	74.55173265
4	27.38909978	74.58894831	50	27.35918463	74.57022615	96	27.37292694	74.55218963
5	27.38829246	74.58935742	51	27.35851498	74.56957612	97	27.37364054	74.55277808
6	27.38748515	74.58976652	52	27.35803158	74.56876951	98	27.37432441	74.55340742
7	27.38667783	74.59017562	53	27.35766124	74.56786786	99	27.3748723	74.55418588
8	27.38585346	74.5905392	54	27.35726926	74.56697801	100	27.37541029	74.55497457
9	27.38502735	74.59089815	55	27.35686364	74.5660956	101	27.37602812	74.55567958
10	27.38420123	74.59125709	56	27.35635183	74.56529025	102	27.37669498	74.5563332
11	27.38337511	74.59161603	57	27.3557593	74.56455426	103	27.37736365	74.55698449
12	27.38251202	74.59181575	58	27.35513354	74.56385152	104	27.37803396	74.55763367
13	27.3816401	74.5919925	59	27.35442576	74.5632559	105	27.37864925	74.55834588
14	27.38076817	74.59216926	60	27.35376718	74.56259327	106	27.37924368	74.55908199
15	27.37990234	74.59237707	61	27.35317143	74.56187961	107	27.37983811	74.5598181
16	27.37904472	74.59262665	62	27.35309627	74.56091731	108	27.38029859	74.5606614
17	27.37818265	74.59280977	63	27.35324318	74.55993859	109	27.38068927	74.56155232
18	27.37758102	74.59214533	64	27.35341227	74.55896515	110	27.38101267	74.56247567
19	27.37681837	74.59164672	65	27.35363404	74.55800427	111	27.38132174	74.56340594
20	27.37602097	74.59121385	66	27.35420815	74.55729914	112	27.38163082	74.56433621
21	27.37528919	74.59066545	67	27.35504538	74.55697387	113	27.38199689	74.56523983
22	27.37460211	74.59003866	68	27.35585897	74.55664929	114	27.38236981	74.56614026
23	27.37390331	74.58942848	69	27.35654299	74.55601831	115	27.38274271	74.56704069
24	27.37326029	74.58875025	70	27.35717811	74.55533538	116	27.38311562	74.56794113
25	27.37266228	74.58801786	71	27.35759025	74.55445676	117	27.38348852	74.56884157
26	27.37206951	74.58728009	72	27.35800237	74.55357815	118	27.38386141	74.56974201
27	27.37166105	74.58640394	73	27.35802032	74.55258937	119	27.38426382	74.57062593
28	27.37115075	74.58559249	74	27.35802505	74.5515969	120	27.38468265	74.57150067
29	27.37052873	74.58489047	75	27.35833612	74.55075225	121	27.38510147	74.57237541
30	27.36989656	74.58419496	76	27.35907318	74.55020205	122	27.38552962	74.57324419
31	27.36930176	74.58346381	77	27.35968703	74.54952007	123	27.38598889	74.57409308
32	27.36879545	74.58264962	78	27.36051306	74.54916095	124	27.38644816	74.57494197
33	27.3683165	74.58181455	79	27.3613279	74.54877668	125	27.3870939	74.57559804
34	27.36781641	74.58099822	80	27.36216531	74.54846845	126	27.38782837	74.57599834
35	27.36712391	74.58039345	81	27.36291111	74.54793242	127	27.38790646	74.57692419
36	27.3663453	74.57994059	82	27.36358028	74.54729146	128	27.38824113	74.5778433
37	27.36585267	74.5791515	83	27.36404307	74.54644504	129	27.38880869	74.57860461
38	27.36549375	74.57826685	84	27.36483211	74.54601601	130	27.3894246	74.57931823
39	27.3647095	74.57789257	85	27.36570366	74.54585157	131	27.38997089	74.58008868
40	27.3638709	74.57770513	86	27.36654372	74.54602035	132	27.39055552	74.5808314
41	27.3633533	74.57695885	87	27.36689243	74.54691653	133	27.39118168	74.58152518

42	27.3632495	74.57597693	88	27.36709157	74.54788041	134	27.39147186	74.58242471
43	27.36315116	74.57501041	89	27.36761903	74.54866322	135	27.39114445	74.58331686
44	27.36287071	74.57407349	90	27.36828514	74.54931397	136	27.39106598	74.58430562
45	27.3625977	74.57313356	91	27.36901377	74.5498727	137	27.39114064	74.58529084
46	27.36219468	74.57226602	92	27.36978971	74.55035203	138	27.3914671	74.58621248

Didwana

S.no	Longitude	Latitude	S.no	Longitude	Latitude	S.no	Longitude	Latitude
1	74.59305887	27.37924625	22	74.58965998	27.39427894	43	74.60799621	27.39067632
2	74.59271074	27.38007406	23	74.59025227	27.39493951	44	74.6075835	27.38987143
3	74.59248546	27.38093544	24	74.5911261	27.3953599	45	74.60703313	27.3891378
4	74.59229231	27.38180459	25	74.59208198	27.39558379	46	74.6064258	27.38844585
5	74.59207545	27.38266874	26	74.59304412	27.39579961	47	74.60555212	27.38802524
6	74.59181303	27.3835233	27	74.59398915	27.39605578	48	74.60468314	27.38759814
7	74.59153606	27.384374	28	74.5949798	27.39600118	49	74.60393816	27.38701257
8	74.5912342	27.38521811	29	74.5959704	27.3959437	50	74.60310449	27.38653458
9	74.59087398	27.38604137	30	74.59695805	27.39587322	51	74.60227085	27.38605595
10	74.59044032	27.38683841	31	74.59789552	27.39558185	52	74.60150494	27.38549231
11	74.59002463	27.38764267	32	74.59882376	27.39527546	53	74.60076506	27.38490225
12	74.5896437	27.38846089	33	74.5996109	27.39473811	54	74.60004185	27.38429539
13	74.58921328	27.3892582	34	74.60050808	27.3943589	55	74.5994089	27.38361283
14	74.58874576	27.39003983	35	74.60140528	27.39397974	56	74.59868998	27.38300696
15	74.58827823	27.39082146	36	74.60230262	27.39360086	57	74.59781954	27.38258106
16	74.58781071	27.39160309	37	74.60319965	27.39322139	58	74.59707173	27.38199996
17	74.58699278	27.39208244	38	74.60409491	27.39283862	59	74.59640693	27.38135622
18	74.58650644	27.39278164	39	74.60503981	27.39257196	60	74.59565383	27.380779
19	74.58696884	27.39351961	40	74.6059477	27.39223263	61	74.59508282	27.38006845
20	74.58789247	27.39376433	41	74.60679666	27.39177344	62	74.59455702	27.37931688
21	74.58887543	27.39388682	42	74.60771636	27.3914731	63	74.59383257	27.37878633

Details of Catchment Area/Zone of influence of Didwana (Khalda), Nagaur, Rajasthan
207.97 Hectares

The geo- coordinates of zone of influence of Didwana (Khalda), Nagaur, Rajasthan

Didwana

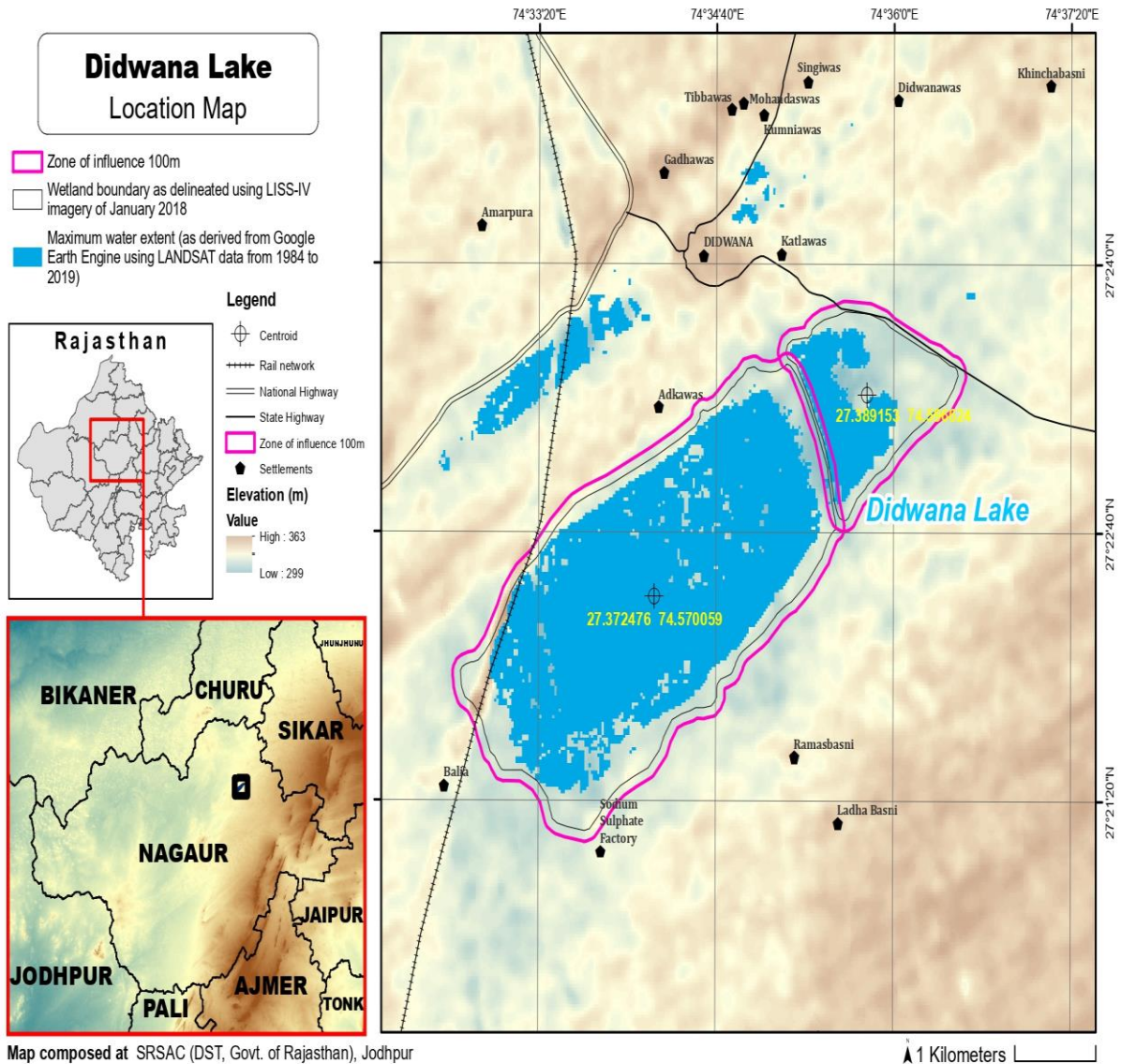
S.no	Latitude	Longitude	S.no	Latitude	Longitude	S.no	Latitude	Longitude
1	27.39154011	74.58842476	49	27.35995972	74.5719472	97	27.37121515	74.5500991
2	27.39080957	74.58898388	50	27.35916479	74.57152027	98	27.37199903	74.55056096
3	27.39006561	74.58952304	51	27.35849514	74.57087024	99	27.37280159	74.55098171
4	27.38926793	74.58995258	52	27.35782549	74.57022022	100	27.3735629	74.55148152
5	27.38846062	74.59036169	53	27.35732373	74.56942096	101	27.37427649	74.55206997
6	27.3876533	74.59077078	54	27.35695338	74.56851931	102	27.37495463	74.55270734
7	27.38684364	74.59117365	55	27.35656988	74.56762484	103	27.37550717	74.55348175
8	27.38601753	74.5915326	56	27.35616427	74.56674243	104	27.37604516	74.55427045
9	27.38519141	74.59189154	57	27.35566994	74.5659244	105	27.37665931	74.55497932
10	27.3843653	74.59225048	58	27.3550748	74.56519102	106	27.37732617	74.55563294
11	27.38353918	74.59260941	59	27.35444163	74.56449796	107	27.37799509	74.5562839
12	27.38267121	74.5929222	60	27.35372851	74.56390901	108	27.3786654	74.55693308
13	27.38179928	74.59296897	61	27.35308004	74.56323261	109	27.37927957	74.55764682
14	27.38092736	74.59314571	62	27.35245472	74.56253265	110	27.37987401	74.55838292
15	27.38006205	74.59335614	63	27.35216852	74.5615959	111	27.38046844	74.55911903

16	27.37920442	74.59360572	64	27.35224309	74.56061462	112	27.38096743	74.55993532
17	27.37834171	74.59382128	65	27.35239	74.5596359	113	27.3813581	74.56082625
18	27.37750156	74.59356998	66	27.35256644	74.55866416	114	27.38171205	74.56173499
19	27.37691882	74.59283716	67	27.35278926	74.55770362	115	27.38202113	74.56266526
20	27.37613478	74.59237899	68	27.35325101	74.55686156	116	27.3823302	74.56359553
21	27.37533782	74.59194512	69	27.35397723	74.55633837	117	27.3826717	74.56451065
22	27.3746332	74.59134711	70	27.35481446	74.5560131	118	27.38304462	74.56541108
23	27.37394612	74.59072032	71	27.35560383	74.55559887	119	27.38341753	74.56631151
24	27.37324479	74.59011373	72	27.35628784	74.55496789	120	27.38379043	74.56721195
25	27.37261008	74.5894246	73	27.35674413	74.55412655	121	27.38416333	74.56811239
26	27.37201201	74.58869227	74	27.35713103	74.55324088	122	27.38453623	74.56901283
27	27.37141924	74.5879545	75	27.35713577	74.55224842	123	27.38492408	74.56990491
28	27.37099462	74.58708954	76	27.3571294	74.55125643	124	27.38534291	74.57077965
29	27.37049405	74.58627179	77	27.35740915	74.55032865	125	27.38576174	74.57165439
30	27.36987703	74.58556434	78	27.3581053	74.54971902	126	27.38618056	74.57252914
31	27.36924455	74.58486919	79	27.35877332	74.54908912	127	27.38663858	74.57337883
32	27.36864558	74.58414142	80	27.35948817	74.5485423	128	27.38709784	74.57422772
33	27.36813341	74.58333169	81	27.36030998	74.54817204	129	27.38777187	74.57477371
34	27.36765447	74.58249662	82	27.36113169	74.54780739	130	27.38847814	74.57531854
35	27.36716471	74.58167114	83	27.36194758	74.54744565	131	27.38880294	74.57620926
36	27.36643058	74.58114729	84	27.36267933	74.54688875	132	27.38894575	74.5771503
37	27.3656729	74.58063428	85	27.36319625	74.54609336	133	27.38946891	74.57794153
38	27.36515268	74.57984794	86	27.36382549	74.54542984	134	27.39008483	74.57865515
39	27.36482653	74.57892927	87	27.36463977	74.54504423	135	27.39063267	74.57942668
40	27.36395384	74.5788626	88	27.36551146	74.54487838	136	27.39121936	74.58016777
41	27.36317827	74.57839189	89	27.36639494	74.54485035	137	27.39184941	74.58085746
42	27.36259727	74.57765003	90	27.36717545	74.54530531	138	27.39224354	74.58171515
43	27.36241	74.57668289	91	27.36760422	74.5461626	139	27.39236051	74.58269224
44	27.36236697	74.57569493	92	27.36783537	74.54711775	140	27.39201212	74.58359307
45	27.36210715	74.57476164	93	27.36824916	74.54796223	141	27.39195149	74.58458142
46	27.36189265	74.57379941	94	27.36891795	74.54860972	142	27.39217681	74.585533
47	27.3614926	74.57292959	95	27.36966327	74.54914044	143	27.39258778	74.58638802
48	27.36074762	74.57239214	96	27.37043921	74.54961977	144	27.39241763	74.58733022

Didwana

S.no	Longitude	Latitude	S.no	Longitude	Latitude	S.no	Longitude	Latitude
1	74.59295956	27.37811564	24	74.58867465	27.39475595	47	74.60894662	27.39126344
2	74.59226005	27.37870927	25	74.58928627	27.39539242	48	74.60894933	27.39039474
3	74.59187439	27.37952236	26	74.59011231	27.39587872	49	74.608529	27.38959299
4	74.59159878	27.38037178	27	74.59099795	27.39627504	50	74.60801647	27.38883933
5	74.59140562	27.38124093	28	74.59196643	27.39646944	51	74.6074345	27.38812152
6	74.59121246	27.38211008	29	74.59292485	27.39669713	52	74.6066851	27.38756405
7	74.59095503	27.38296568	30	74.59387473	27.3969391	53	74.60581177	27.38714286
8	74.59069216	27.38382012	31	74.59486568	27.39689571	54	74.60498842	27.38665747
9	74.5903903	27.38466423	32	74.59585629	27.39683823	55	74.6042178	27.38610225
10	74.59006503	27.38549998	33	74.59684689	27.39678075	56	74.60336993	27.38564147
11	74.58963137	27.38629702	34	74.59779981	27.39654982	57	74.60256638	27.38512508
12	74.58920392	27.38709658	35	74.59873729	27.39625845	58	74.6018042	27.38455765
13	74.58882299	27.3879148	36	74.5996075	27.39585185	59	74.60108044	27.38395125
14	74.58841018	27.38871956	37	74.60043374	27.39537068	60	74.6004086	27.3833013
15	74.58794266	27.38950119	38	74.60133092	27.39499148	61	74.59973727	27.38264997
16	74.58747514	27.39028282	39	74.6022282	27.39461246	62	74.59894882	27.38212315

17	74.58700396	27.39106139	40	74.60312554	27.39423357	63	74.59811907	27.38164576
18	74.58614303	27.39150105	41	74.60402166	27.39385239	64	74.59740082	27.38103998
19	74.58562407	27.39224594	42	74.60493875	27.39352068	65	74.5967049	27.38041672
20	74.58557848	27.39310003	43	74.60589163	27.39327242	66	74.596042	27.37977402
21	74.58594232	27.3939189	44	74.60675211	27.39283358	67	74.59551993	27.37902048
22	74.58673389	27.39444821	45	74.60762184	27.39241915	68	74.59495855	27.37829296
23	74.58769119	27.39463705	46	74.6084872	27.39203163	69	74.59407157	27.37792284



Schedule-II**Prohibited Activities in Didwana Wetland :-**

1. Conversion for non wetland uses including encroachments of any kind;
2. Setting up of any new industry and expansion of existing industries;
3. Manufacture or/and handling or/and storage or/and disposal of construction and demolition waste covered under the Construction and Demolition Waste Management Rules, 2016; hazardous substances covered under the Manufacture, Storage and Import of Hazardous Chemical Rules, 1989 or the Rules for Manufacture, Use, Import, Export and Storage of Hazardous Microorganism Genetically Engineered organized or cells, 1989 or the Hazardous Waste (Management, Handling and Transboundary Movement) Rules, 2008; electronic waste covered under the E-Waste (Management) Rules 2016; plastic waste covered under Plastic Waste (Management) Rules, 2016;
4. Solid waste storage and disposal;
5. Discharge of untreated waste and effluents from industries, cities, towns, villages and other human settlements;
6. Any construction of permanent nature except for boat jetties within fifty metres from the mean high flood level observed in the past ten years calculated from the date of commencement of these rules;
7. Commercial mining, stone quarrying and crushing units
8. Commercial water extraction Establishment of large scale commercial livestock and poultry farms;
9. Reducing area/ capacity of the water body;
10. Feeding of fishes and migratory birds by the public;
11. Any type of poaching.

Prohibited Activities in Catchment Area/Zone of Influence :-

1. Discharge of untreated Solid/liquid waste and effluents;
2. Manufacture or/and handling or/and storage or/and disposal of construction and demolition waste covered under the Construction and Demolition Waste Management Rules, 2016; hazardous substances covered under the Manufacture, Storage and Import of Hazardous Chemical Rules, 1989 or the Rules for Manufacture, Use, Import, Export and Storage of Hazardous Microorganism Genetically Engineered organized or cells, 1989 or the Hazardous Waste (Management, Handling and Transboundary Movement) Rules, 2008; electronic waste covered under the E-Waste (Management) Rules

2016; plastic waste covered under Plastic Waste (Management) Rules, 2016;

3. Extraction of commercial water including groundwater.
4. Any type of poaching;

Schedule–III

Regulated Activities in Didwana Wetland :-

1. Fisheries;
2. Plying of boats;
3. Desilting;
4. Construction of temporary structures;
5. Water extraction for certain purposes.

Regulated Activities in Catchment Area/Zone of Influence :-

1. Conversion of land for any type of construction;
2. Setting up of any new industries and expansion of existing industries;
3. Mining.

[F.No.6 (3) Env/2023]
By order of the Governor,

Shikhar Agrawal,
Additional Chief Secretary to the Government.

Government Central Press, Jaipur.