 सत्यमेव जयते	<b>राजस्थान राजपत्र</b> <b>विशेषांक</b>	<b>RAJASTHAN GAZETTE</b> <b>Extraordinary</b>
	<b>साधिकार प्रकाशित</b>	<b>Published by Authority</b>
	वैशाख 04, सोमवार, शाके 1945-अप्रैल 24, 2023 <i>Vaisakha 04, Monday, Saka 1945- April 24, 2023</i>	

भाग 4 (ग)

उप-खण्ड(II)

राज्य सरकार तथा अन्य राज्य प्राधिकारियों द्वारा जारी किये गये कानूनी आदेश तथा अधिसूचनाएं।

**Department of Environment and Climate Change**

Notification

**Jaipur, March 21, 2023**

**S.O.43** .- The following draft of the notification, which the State Government proposes to issue in exercise of the powers conferred by rule 7 of the Wetland (Conservation and Management) Rules, 2017 read with Environment (Protection) Act, 1986 (Central Act No. 29 of 1986), is hereby published for the information of the persons likely to be concerned or affected thereby and notice is hereby given to them that the said draft notification shall be taken into consideration after the expiry of a period of sixty days from the date on which copies of this notification as published in the Official Gazette are made available to the public.

Any person interested in making any objection or suggestion on the proposals contained in the draft notification may forward the same in writing for consideration to the State Government within the period of 60 days as specified above to the Director cum Joint Secretary, Department of Environment and Climate Change Room No. 8240 SSO Building, Government Secretariat, Jaipur, Rajasthan or at env\_raj@yahoo.co.in.

**Draft Notification**

WHEREAS, the Bainthali wetland, situated in Kadaiya Chorr village of Chabra Tehsil in Baran district of Rajasthan, is considered to be critically significant for its ecosystem services and biodiversity values for the local communities and society at large;

AND WHEREAS, it is considered that for sustaining the said values, the ecological character of wetland ecosystem needs to be maintained by regulating developmental activities within the wetland as well as within its zone of influence;

NOW THEREFORE, the State Government declares that the Bainthali wetland shall be covered under the provisions of the Wetlands (Conservation and Management) Rules, 2017 and notifies that,-

- (i) the extent of the wetland /wetland complex and its zone of influence shall be as described in Schedule-I of this notification;
- (ii) the activities prohibited within the wetland and its zone of influence shall be as listed in Schedule-II of this notification;
- (iii) the activities regulated within the wetland and its zone of influence, i.e. permitted only with permission of the State Government shall be as listed in Schedule-III of this notification. Request for permission for regulated activities may be made to the District Environment Committee headed by the District Collector; and

- (iv) the State Wetland Authority, Rajasthan shall monitor the enforcement of the provisions of this notification.

### Schedule-I

Bethali Wetland Complex comprising of total area of 808.56 Hectare within the following boundary delineation:-

The geo-coordinates of Bethali Dam Wetland Baran, Rajasthan

Bethali Dam								
S. no	Latitude	Longitude	S.no	Latitude	Longitude	S.no	Latitude	Longitude
1	24.60090457390	76.99476155980	109	24.58954293140	76.99043635560	217	24.62106812030	76.96237013160
2	24.60016414010	76.99522819230	110	24.59035696170	76.99035404450	218	24.62124250280	76.96333520440
3	24.59940832380	76.99489533400	111	24.59075015880	76.99036781190	219	24.62131222400	76.96431972060
4	24.59913234730	76.99417741540	112	24.59034008830	76.98957917030	220	24.62133695580	76.96530652620
5	24.59873367700	76.99490353770	113	24.58948498490	76.98939445500	221	24.62129699330	76.96629273170
6	24.59830286100	76.99571010070	114	24.58885221550	76.98918992420	222	24.62123747730	76.96727805260
7	24.59865269320	76.99652984870	115	24.58808125570	76.98944443670	223	24.62118457150	76.96826384730
8	24.59811792630	76.99694455430	116	24.58805575970	76.98888797810	224	24.62109106840	76.96924556430
9	24.59728971990	76.99656858770	117	24.58818872440	76.98816250590	225	24.62105784320	76.97023226950
10	24.59675007120	76.99580216150	118	24.58743136300	76.98769438900	226	24.62113818260	76.97121067780
11	24.59639810620	76.99512614240	119	24.58741218710	76.98701164770	227	24.62133354020	76.97217162020
12	24.59559113850	76.99553576100	120	24.58717257650	76.98634665040	228	24.62131834090	76.97315801010
13	24.59479022850	76.99541052560	121	24.58759366460	76.98588572450	229	24.62111616000	76.97411576450
14	24.59448548690	76.99615224480	122	24.58781768820	76.98661323090	230	24.62100102620	76.97509351000
15	24.59436416560	76.99519676390	123	24.58827800980	76.98742699850	231	24.62084217200	76.97606522180
16	24.59474595980	76.99437575070	124	24.58843668490	76.98671906660	232	24.62058906790	76.97700960340
17	24.59484246300	76.99363891140	125	24.58888796840	76.98654516110	233	24.62017054640	76.97788445720
18	24.59416420600	76.99331951380	126	24.58891066860	76.98749757170	234	24.61983577710	76.97879867910
19	24.59413818310	76.99411894290	127	24.58943823170	76.98801071080	235	24.61944405390	76.97968336410
20	24.59397064690	76.99478674400	128	24.59032422810	76.98789496640	236	24.61899697130	76.98054122000
21	24.59387444280	76.99571802820	129	24.59029553020	76.98704145850	237	24.61853686460	76.98137544900
22	24.59374890780	76.99669560060	130	24.59078560840	76.98641531250	238	24.61782919670	76.98198381970
23	24.59309634260	76.99724206120	131	24.59063593830	76.98545839230	239	24.61717733530	76.98262317320
24	24.59260383010	76.99799403610	132	24.59039730010	76.98455021460	240	24.61636318940	76.98266462760
25	24.59186574530	76.99823973680	133	24.59095084000	76.98466615400	241	24.61605529580	76.98356347420
26	24.59102135420	76.99803503320	134	24.59109077960	76.98561080230	242	24.61597820150	76.98453334510
27	24.59073087220	76.99734651720	135	24.59160912420	76.98635675160	243	24.61562977650	76.98543106730
28	24.59022083180	76.99749511420	136	24.59138841500	76.98724193090	244	24.61536260970	76.98618897880
29	24.59031562080	76.99843709340	137	24.59186834620	76.98804007890	245	24.61594163990	76.98684986540
30	24.58995411970	76.99931231500	138	24.59266131480	76.98785460390	246	24.61656118480	76.98748838580
31	24.58914398530	76.99911587310	139	24.59271526740	76.98689515030	247	24.61740879630	76.98770715640
32	24.58891641610	76.99818799360	140	24.59280412740	76.98592536200	248	24.61746722100	76.98825071390
33	24.58877352900	76.99724097870	141	24.59249858460	76.98509072580	249	24.61662373440	76.98838960360
34	24.58824215990	76.99707384870	142	24.59226993710	76.98417080150	250	24.61725117310	76.98889848420

35	24.58773668660	76.99788728900	143	24.59268562910	76.98385541810	251	24.61791819700	76.98921479270
36	24.58717637220	76.99862596660	144	24.59318640880	76.98362986310	252	24.61738026170	76.98962560450
37	24.58692766330	76.99925047050	145	24.59338208680	76.98304940200	253	24.61658923100	76.98926695770
38	24.58694794260	76.99833482760	146	24.59366263620	76.98387870390	254	24.61601980990	76.98946542200
39	24.58742311570	76.99750115750	147	24.59373119150	76.98481933590	255	24.61558315110	76.98906699510
40	24.58757479830	76.99659813790	148	24.59437129780	76.98548010470	256	24.61497647510	76.98909169190
41	24.58685494780	76.99604821080	149	24.59465790820	76.98638600940	257	24.61532994920	76.98993982250
42	24.58614207050	76.99643765800	150	24.59505255620	76.98698172530	258	24.61559724660	76.99073464880
43	24.58533464940	76.99671139490	151	24.59518834450	76.98620674990	259	24.61487145670	76.99055460090
44	24.58529504050	76.99765292650	152	24.59573916490	76.98591039880	260	24.61402601820	76.99078362170
45	24.58549283050	76.99859106920	153	24.59624978140	76.98639449450	261	24.61421318880	76.99007386360
46	24.58510487160	76.99868859440	154	24.59627238590	76.98722617330	262	24.61423443920	76.98914884970
47	24.58484578240	76.99776333850	155	24.59698665720	76.98698088630	263	24.61375410720	76.98832250240
48	24.58420094100	76.99722631860	156	24.59770332950	76.98663692160	264	24.61300120270	76.98831425860
49	24.58337243510	76.99701923230	157	24.59745805030	76.98584056690	265	24.61224432920	76.98872248980
50	24.58283834060	76.99768271500	158	24.59799898110	76.98514575220	266	24.61252081190	76.98955306570
51	24.58225123430	76.99820681230	159	24.59880657610	76.98527180300	267	24.61297384180	76.99039520820
52	24.58218448370	76.99913353550	160	24.59940236560	76.98484575450	268	24.61323662910	76.99123641370
53	24.58150467220	76.99973233780	161	24.59935702290	76.98390508190	269	24.61327597870	76.99209490560
54	24.58124880410	77.00067156790	162	24.60016169460	76.98366965400	270	24.61374407240	76.99293919840
55	24.58125608690	77.00165318830	163	24.60106072090	76.98374503030	271	24.61421216100	76.99378349740
56	24.58082665950	77.00250076250	164	24.60195732180	76.98369417380	272	24.61411329020	76.99433106610
57	24.58011528690	77.00307700430	165	24.60270187480	76.98323153760	273	24.61351926320	76.99363306240
58	24.57924702330	77.00323487830	166	24.60300303880	76.98230076400	274	24.61292459880	76.99295091560
59	24.57845016680	77.00281498860	167	24.60312647730	76.98136396970	275	24.61228779080	76.99230981460
60	24.57848403870	77.00187783470	168	24.60329298890	76.98049444220	276	24.61196545360	76.99256350030
61	24.57887871230	77.00099384600	169	24.60290373410	76.97965523880	277	24.61262350900	76.99313342740
62	24.57943945930	77.00022508180	170	24.60237338940	76.97888034450	278	24.61309488720	76.99395715490
63	24.58021480560	76.99972251630	171	24.60185796580	76.97806981660	279	24.61359132570	76.99469651540
64	24.58081180210	76.99901675440	172	24.60141451210	76.97722292410	280	24.61361632820	76.99566781810
65	24.58124797530	76.99818478920	173	24.60196127720	76.97647903920	281	24.61366467610	76.99660644830
66	24.58042771900	76.99821564710	174	24.60222326730	76.97556002380	282	24.61289332030	76.99688218130
67	24.58040983570	76.99788596040	175	24.60305143190	76.97526872360	283	24.61267168270	76.99598596340
68	24.58094568510	76.99721878430	176	24.60375789520	76.97468348900	284	24.61223686340	76.99578632090
69	24.58029237830	76.99670734580	177	24.60422132120	76.97385413560	285	24.61209928400	76.99669045690
70	24.57956900030	76.99622031800	178	24.60436438600	76.97289933360	286	24.61198294520	76.99764786760
71	24.58037537670	76.99619463540	179	24.60442818980	76.97194086850	287	24.61162877510	76.99814264490
72	24.58124012760	76.99612380070	180	24.60420771510	76.97102263980	288	24.61084185020	76.99774715690
73	24.58202433990	76.99651082330	181	24.60362774690	76.97027021120	289	24.61032954640	76.99696618520
74	24.58256704570	76.99582548260	182	24.60305696000	76.96951458400	290	24.61025587770	76.99598939030
75	24.58194365680	76.99536802220	183	24.60282253080	76.96859360380	291	24.61068273630	76.99519513510
76	24.58131510300	76.99470212230	184	24.60311103540	76.96765803700	292	24.61120108890	76.99460396620
77	24.58142037340	76.99414528870	185	24.60356268970	76.96682795320	293	24.61074747680	76.99375147030

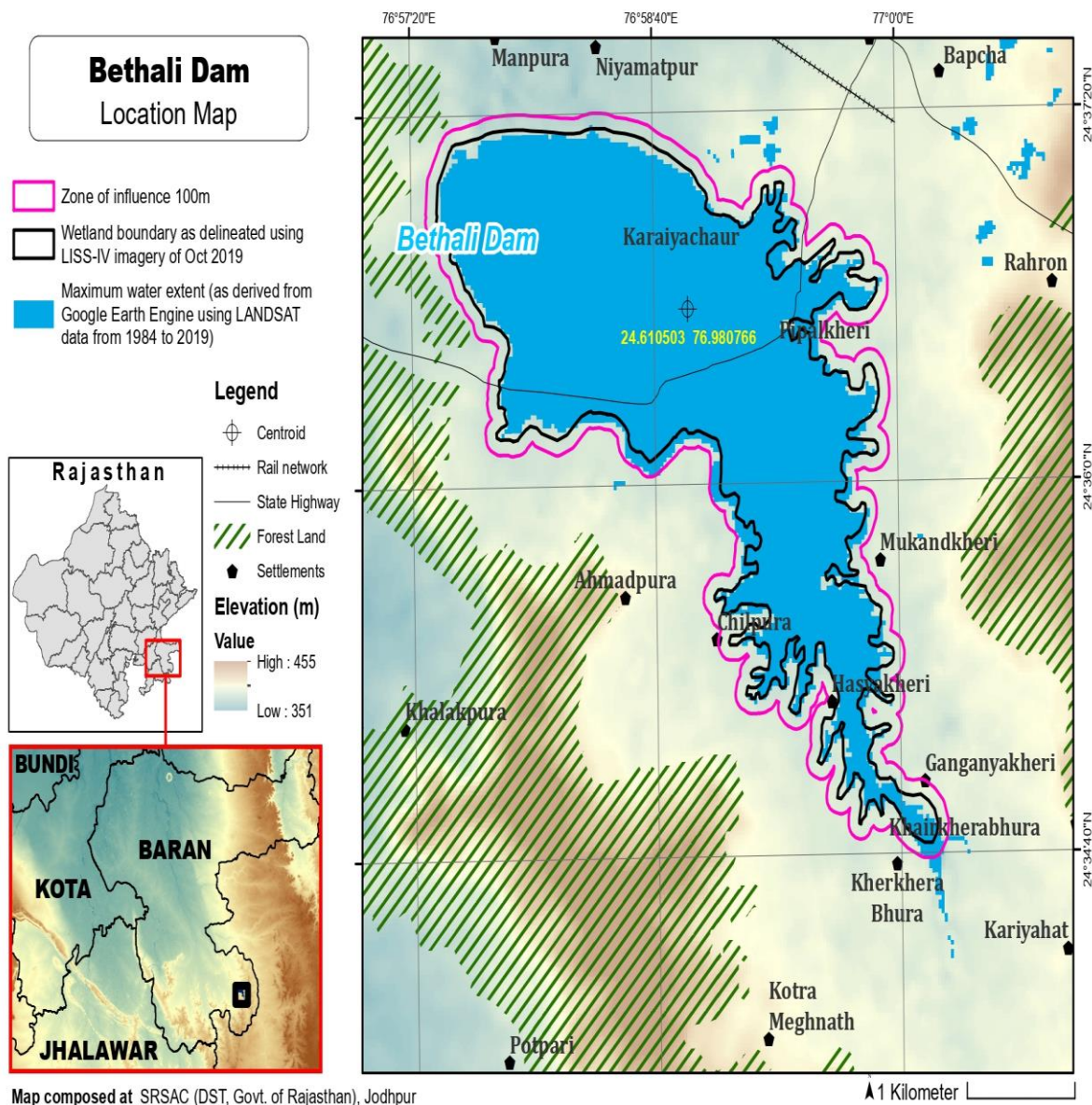
78	24.58219731190	76.99460061940	186	24.60348010000	76.96590123490	294	24.61034612240	76.99288104850
79	24.58305458230	76.99481432390	187	24.60287945020	76.96516668480	295	24.60988381280	76.99214460130
80	24.58393614930	76.99464958450	188	24.60286376600	76.96422986350	296	24.60953534050	76.99190088380
81	24.58482253270	76.99463204020	189	24.60296554920	76.96326859090	297	24.60976080510	76.99095188780
82	24.58556413200	76.99472425280	190	24.60359731820	76.96364456860	298	24.60945878380	76.99012372730
83	24.58507958030	76.99409535280	191	24.60418350310	76.96400605900	299	24.60860906050	76.99026560690
84	24.58440570550	76.99358238540	192	24.60480189610	76.96358856440	300	24.60889922300	76.99090142390
85	24.58364008930	76.99306274790	193	24.60552207600	76.96336810280	301	24.60892708530	76.99174077560
86	24.58331932540	76.99235888810	194	24.60634352450	76.96346928720	302	24.60820601980	76.99204055790
87	24.58411186960	76.99270482370	195	24.60701863360	76.96397289940	303	24.60737280680	76.99209728800
88	24.58499535400	76.99270685630	196	24.60788079790	76.96422598890	304	24.60747935380	76.99302414100
89	24.58584392240	76.99294049540	197	24.60873869410	76.96429500480	305	24.60692251620	76.99326077150
90	24.58606038450	76.99379109660	198	24.60938481610	76.96364684980	306	24.60639577320	76.99371338430
91	24.58684943550	76.99423026410	199	24.60964909640	76.96271181680	307	24.60654563010	76.99462336620
92	24.58769685530	76.99410247180	200	24.61010464660	76.96208109540	308	24.60631820750	76.99547321320
93	24.58850349170	76.99368132110	201	24.61080043010	76.96148445440	309	24.60552690830	76.99579917800
94	24.58915694570	76.99309615810	202	24.61151113880	76.96088978700	310	24.60559766850	76.99673620570
95	24.59005530980	76.99302453190	203	24.61217658300	76.96028268700	311	24.60644584910	76.99692609880
96	24.59030799220	76.99236079310	204	24.61299692470	76.95987313850	312	24.60698414970	76.99745044530
97	24.58944794110	76.99221533880	205	24.61356727110	76.95920629480	313	24.60632916340	76.99803630780
98	24.58905035900	76.99160604380	206	24.61433952510	76.95924232150	314	24.60545285350	76.99822376780
99	24.58853592740	76.99178156440	207	24.61475110470	76.95844877150	315	24.60458270070	76.99802797660
100	24.58795359050	76.99147662440	208	24.61550063020	76.95795332520	316	24.60386930470	76.99748653940
101	24.58734428660	76.99112990540	209	24.61637192100	76.95789060340	317	24.60350219790	76.99658917510
102	24.58660315840	76.99076133650	210	24.61726699190	76.95792370530	318	24.60310274850	76.99575180900
103	24.58630898060	76.99006924410	211	24.61816653580	76.95800619770	319	24.60256362640	76.99545265510
104	24.58700074930	76.98998872500	212	24.61896774300	76.95845674450	320	24.60250303690	76.99642523920
105	24.58782848610	76.99030737540	213	24.61976041150	76.95892924660	321	24.60245022870	76.99741087990
106	24.58868781450	76.99059662380	214	24.62046309290	76.95949627960	322	24.60202436690	76.99810980810
107	24.58937716040	76.99107784040	215	24.62063903060	76.96045840510	323	24.60156138210	76.99746680690
108	24.59018553700	76.99110710320	216	24.62082943570	76.96142336840	324	24.60167524800	76.99651019400
						325	24.60161162560	76.99557334770

**The geo-coordinates of Zone of influence of Bethali Wetland, Baran, Rajasthan**

The detailed Map of **Bethali Wetland, Baran**, and its Zone of Influence is annexed herewith as Schedule-I ('A').

Bethali Dam								
S. no	Latitude	Longitude	S.no	Latitude	Longitude	S.no	Latitude	Longitude
1	24.62187700840	76.97539529230	76	24.59161208590	76.99922044280	151	24.59454280090	76.98436334620
2	24.62170603100	76.97636479900	77	24.59092364650	76.99947406050	152	24.59528072450	76.98482879510
3	24.62146159720	76.97731429720	78	24.59035339930	77.00020467880	153	24.59617242450	76.98495764290
4	24.62104022390	76.97818755560	79	24.58947151480	77.00034036890	154	24.59696816150	76.98500447680
5	24.62069611840	76.97909766020	80	24.58865579520	76.99998220430	155	24.59752710990	76.98425883080
6	24.62032238350	76.97999184810	81	24.58816097290	76.99917192810	156	24.59836941860	76.98401394400
7	24.61987529890	76.98084970850	82	24.58796177360	76.99974703380	157	24.59874854540	76.98313922390
8	24.61946687370	76.98172955840	83	24.58725437020	77.00029412560	158	24.59952600510	76.98266837690
9	24.61881870070	76.98241051900	84	24.58639697930	77.00008161720	159	24.60042137260	76.98270959620
10	24.61817633240	76.98308940290	85	24.58581434500	76.99989521510	160	24.60132176960	76.98276441050
11	24.61741093630	76.98357699960	86	24.58495056770	76.99994715180	161	24.60202300680	76.98237018870
12	24.61694659930	76.98413147470	87	24.58431697250	76.99927026620	162	24.60218840020	76.98143979130
13	24.61678799110	76.98510169520	88	24.58400920800	76.99835127010	163	24.60221919930	76.98046041440
14	24.61647019850	76.98596049520	89	24.58333604710	76.99856744250	164	24.60178543460	76.97966379520
15	24.61708421390	76.98665726810	90	24.58309764020	76.99940696790	165	24.60125893920	76.97886233350
16	24.61795442130	76.98683939550	91	24.58254969910	77.00018210130	166	24.60076234110	76.97803807550
17	24.61852260470	76.98758515810	92	24.58212468280	77.00095389620	167	24.60050760440	76.97711214890
18	24.61870666770	76.98852709330	93	24.58214567770	77.00193640440	168	24.60091305940	76.97626634700
19	24.61884442160	76.98949812640	94	24.58173244330	77.00280908300	169	24.60127573100	76.97539454340
20	24.61845948830	76.99037454440	95	24.58113587700	77.00354173950	170	24.60183645210	76.97464132980
21	24.61763142780	76.99065504560	96	24.58036644830	77.00402610280	171	24.60266672240	76.97428593680
22	24.61676323900	76.99043142040	97	24.57949784170	77.00426973180	172	24.60332391390	76.97369930140
23	24.61640188320	76.99118826050	98	24.57861160420	77.00409566290	173	24.60347448350	76.97273251390
24	24.61572820420	76.99180279960	99	24.57785237590	77.00356324150	174	24.60350021970	76.97175263740
25	24.61486737900	76.99167587690	100	24.57749326310	77.00270153830	175	24.60298433510	76.97096397570
26	24.61423987470	76.99192926000	101	24.57756223340	77.00172147510	176	24.60238088820	76.97022983140
27	24.61470796900	76.99277355910	102	24.57792750290	77.00081882070	177	24.60201900960	76.96932821740
28	24.61517605800	76.99361786430	103	24.57843350600	77.00000593520	178	24.60193735720	76.96837469790
29	24.61531442530	76.99455544310	104	24.57906740730	76.99932071220	179	24.60222586140	76.96743913740
30	24.61473707860	76.99527114450	105	24.57933218280	76.99871560080	180	24.60260904220	76.96655740920
31	24.61460696060	76.99606071260	106	24.57919870940	76.99777054700	181	24.60220022740	76.96582479540
32	24.61449667560	76.99702322920	107	24.57907678630	76.99704696630	182	24.60189142920	76.96491906500
33	24.61387103730	76.99770896600	108	24.57866561100	76.99621471290	183	24.60196462860	76.96394864970
34	24.61300461740	76.99792539910	109	24.57902815160	76.99533810080	184	24.60209243350	76.96298812370
35	24.61268331760	76.99882253430	110	24.57987603580	76.99509959370	185	24.60266728220	76.96226934670
36	24.61186237810	76.99913843980	111	24.58035515860	76.99501456650	186	24.60355543620	76.96222896220
37	24.61096957050	76.99904145340	112	24.58024844440	76.99407121620	187	24.60422529880	76.96263890960
38	24.61023119180	76.99847700630	113	24.58070268440	76.99325548730	188	24.60507120210	76.96234819500

39	24.60962729010	76.99774399720	114	24.58157641540	76.99317298060	189	24.60595809660	76.96247160610
40	24.60938386400	76.99680251220	115	24.58239262810	76.99354844500	190	24.60683897280	76.96260837990
41	24.60936123230	76.99582110330	116	24.58285291050	76.99367268950	191	24.60759034000	76.96305707010
42	24.60963928360	76.99491131840	117	24.58230474900	76.99291334110	192	24.60842545380	76.96334538300
43	24.60992974500	76.99418976490	118	24.58248703890	76.99197338680	193	24.60876525420	76.96246223880
44	24.60949122140	76.99334387530	119	24.58314104430	76.99135013390	194	24.60901770020	76.96153522750
45	24.60869532400	76.99296919990	120	24.58398786990	76.99158711210	195	24.60982257110	76.96113859780
46	24.60827036930	76.99366182860	121	24.58485705980	76.99168118900	196	24.61046113800	76.96044794820
47	24.60766925890	76.99435886790	122	24.58575245600	76.99177447220	197	24.61115288000	76.95984206260
48	24.60742361440	76.99522186810	123	24.58653235500	76.99226358560	198	24.61190878800	76.95933633700
49	24.60726503770	76.99607744280	124	24.58692363260	76.99309751220	199	24.61267840650	76.95886922380
50	24.60778409480	76.99685538430	125	24.58771576130	76.99301175310	200	24.61330389290	76.95817746700
51	24.60784406700	76.99782252970	126	24.58753983810	76.99264765690	201	24.61406107410	76.95780625710
52	24.60731451560	76.99860012310	127	24.58679597210	76.99213999870	202	24.61474494500	76.95716688850
53	24.60649992120	76.99900763900	128	24.58608793410	76.99165895070	203	24.61561370730	76.95690384190
54	24.60562054060	76.99919688250	129	24.58546863320	76.99099091330	204	24.61650453620	76.95687353960
55	24.60472566630	76.99914369900	130	24.58534962520	76.99004474110	205	24.61740490850	76.95694458110
56	24.60387410280	76.99881772450	131	24.58579485590	76.98920097800	206	24.61830422590	76.95702966130
57	24.60322532480	76.99824453170	132	24.58655926640	76.98873912670	207	24.61912416710	76.95742919900
58	24.60263554790	76.99896552510	133	24.58675622270	76.98838857130	208	24.61991827250	76.95789876470
59	24.60174886950	76.99910169620	134	24.58633712840	76.98753149880	209	24.62070266500	76.95837764910
60	24.60099049480	76.99862357090	135	24.58626463900	76.98655362410	210	24.62128877360	76.95909696120
61	24.60065884780	76.99772304450	136	24.58649169420	76.98561995480	211	24.62148851770	76.96005245310
62	24.60079463860	76.99676454240	137	24.58708963660	76.98492387000	212	24.62168190660	76.96101669720
63	24.60042319320	76.99618887670	138	24.58797394460	76.98496773270	213	24.62189652040	76.96197115370
64	24.59952922500	76.99616702460	139	24.58879111260	76.98528326420	214	24.62211045040	76.96292766350
65	24.59953125790	76.99712021970	140	24.58952678820	76.98581124680	215	24.62219078010	76.96391100540
66	24.59895184760	76.99782659820	141	24.58962483170	76.98555647790	216	24.62223578420	76.96489704250
67	24.59806158350	76.99793063240	142	24.58949323370	76.98459860600	217	24.62222705350	76.96588425810
68	24.59721152070	76.99762231650	143	24.58977158980	76.98369305440	218	24.62216487530	76.96686931490
69	24.59644433640	76.99711250990	144	24.59058015340	76.98331273990	219	24.62211039050	76.96785501400
70	24.59588176490	76.99648160210	145	24.59138473140	76.98355862710	220	24.62204704330	76.96883978160
71	24.59516830330	76.99697197120	146	24.59187993270	76.98278297470	221	24.62197898980	76.96982327780
72	24.59446016820	76.99744786620	147	24.59258855420	76.98224296690	222	24.62198780330	76.97080742930
73	24.59372116940	76.99796718350	148	24.59344474410	76.98203395290	223	24.62219565820	76.97176624110
74	24.59323018670	76.99876107110	149	24.59420312980	76.98252947150	224	24.62224137210	76.97275018350
75	24.59250242550	76.99929982150	150	24.59458892310	76.98338581500	225	24.62215710100	76.97373057290
						226	24.58621472670	76.99751675600



### Schedule-II

#### Prohibited Activities in Bethali Wetland :-

1. Conversion for non wetland uses including encroachments of any kind;
2. Setting up of any new industry and expansion of existing industries;
3. Manufacture or/and handling or/and storage or/and disposal of construction and demolition waste covered under the Construction and Demolition Waste Management Rules, 2016; hazardous substances covered under the Manufacture, Storage and Import of Hazardous Chemical Rules, 1989 or the Rules for Manufacture, Use, Import, Export and Storage of Hazardous Microorganism Genetically Engineered or cells, 1989 or the Hazardous Waste (Management, Handling and Transboundary Movement)

Rules, 2008;electronic waste covered under the E-Waste (Management) Rules 2016;  
plastic waste covered under Plastic Waste (Management) Rules, 2016;

4. Solid waste storage and disposal;
5. Discharge of untreated waste and effluents from industries, cities, towns, villages and other human settlements;
6. Any construction of permanent nature except for boat jetties within fifty metres from the mean high flood level observed in the past ten years calculated from the date of commencement of these rules;
7. Commercial mining, stone quarrying and crushing units
8. Commercial water extraction Establishment of large scale commercial livestock and poultry farms;
9. Reducing area/ capacity of the water body;
10. Feeding of fishes and migratory birds by the public;
11. Any type of poaching.

**Prohibited Activities in Catchment Area/Zone of Influence :-**

1. Discharge of untreated Solid/liquid waste and effluents;
2. Manufacture or/and handling or/and storage or/and disposal of construction and demolition waste covered under the Construction and Demolition Waste Management Rules, 2016; hazardous substances covered under the Manufacture, Storage and Import of Hazardous Chemical Rules, 1989 or the Rules for Manufacture, Use, Import, Export and Storage of Hazardous Microorganism Genetically Engineered organized or cells, 1989 or the Hazardous Waste (Management, Handling and Transboundary Movement) Rules, 2008;electronic waste covered under the E-Waste (Management) Rules 2016; plastic waste covered under Plastic Waste (Management) Rules, 2016;
3. Extraction of commercial water including groundwater.
4. Any type of poaching;



**Schedule-III****Regulated Activities in Benthali Wetland :-**

1. Fisheries;
2. Plying of boats;
3. Desilting;
4. Construction of temporary structures;
5. Water extraction for certain purposes.

**Regulated Activities in Catchment Area/Zone of Influence :-**

1. Conversion of land for any type of construction;
2. Setting up of any new industries and expansion of existing industries;
3. Mining.

**[F.No.6 (3) Env/2023]**  
**By order of the Governor,**

Shikhar Agrawal,  
**Additional Chief Secretary to the Government.**

—————  
**Government Central Press, Jaipur.**