



सत्यमेव जयते

राजस्थान राजपत्र
विशेषांक

साधिकार प्रकाशित

RAJASTHAN GAZETTE
Extraordinary

Published by Authority

भाद्र 09, गुरुवार, शाके 1945-अगस्त 31, 2023
Bhadra 09, Thursday, Saka 1945- August 31, 2023

भाग 4 (ग)

उप-खण्ड (I)

राज्य सरकार तथा अन्य राज्य-प्राधिकारियों द्वारा जारी किये गये (सामान्य आदेशों, उप-विधियों आदि को सम्मिलित करते हुए) सामान्य कानूनी नियम।

Department of Environment and Climate Change
Notification

Jaipur, July 19, 2023

G.S.R.109 .-Whereas the draft notification of the Sabella wetland, situated in Tehsil Dungerpur, district Dungerpur Rajasthan was published as required by rule 7 of the Wetland (Conservation and Management) Rules, 2017 read with the Environment (Protection) Act, 1986 (Central Act No. 29 of 1986), vide notification of the Department of Environment and Climate Change, number G.S.R. 32 dated 24.04.2023 in the Rajasthan Gazette, Extraordinary, Part 4 (ga), sub-part (II), inviting objections and suggestions from all persons likely to be affected thereby before expiry of the period of sixty days from the date on which the copies of the said notification were made available to the public.

And whereas, copies of the Gazette in which the said notification was published were made available to the public on the 24.04.2023.

And whereas, no objections and suggestions were received on the said Draft Notification.

Now therefore, in exercise of the powers conferred by rule 7 of the Wetland (Conservation and Management) Rules, 2017 read with provisions of the Environment (Protection) Act, 1986 (Central Act No. 29 of 1986), the State Government hereby notifies Sabella wetland, situated in Tehsil Dungerpur, district Dungerpur Rajasthan as a wetland and that,-

- (i) the extent of the wetland/wetland complex and its zone of influence shall be as described in Schedule-I of this notification;
- (ii) the activities prohibited within the wetland and its zone of influence shall be as listed in Schedule-II of this notification;
- (iii) the activities regulated within the wetland and its zone of influence, i.e. permitted only with permission of the State Government shall be as listed in Schedule-III of this notification. Request for permission for regulated activities may be made to the District Environment Committee headed by the District Collector; and
- (iv) the State Wetland Authority, Rajasthan shall monitor the enforcement of the provisions of this notification.

Schedule-I

Sabella Talab Wetland comprising of total area of **30.94** Hectare within the following boundary delineation:-

The geo-coordinates of Sabella Talab Wetland of Dungarpur, Rajasthan

Sabella Talab

S.no	Latitude	Longitude	S.no	Latitude	Longitude
1	23.85091760380	73.70167089520	17	23.84368797020	73.70632102160
2	23.85121619740	73.70251815480	18	23.84281340740	73.70627893340
3	23.85164111360	73.70328757900	19	23.84313482840	73.70583557300
4	23.85168306920	73.70416543950	20	23.84390530730	73.70545523120
5	23.85078481260	73.70424896240	21	23.84437431990	73.70465315920
6	23.85005419300	73.70480838050	22	23.84511636210	73.70417780820
7	23.84932848580	73.70535134190	23	23.84549454180	73.70353931520
8	23.84862155780	73.70572975000	24	23.84611544080	73.70288037290
9	23.84793580340	73.70630473230	25	23.84696452640	73.70259425780
10	23.84708657220	73.70606497480	26	23.84770118220	73.70204757530
11	23.84729915630	73.70525136210	27	23.84852800930	73.70165770230
12	23.84706513300	73.70468875900	28	23.84828964050	73.70089283710
13	23.84664389170	73.70555402820	29	23.84740827770	73.70088902750
14	23.84613453540	73.70628590180	30	23.84781513000	73.70017569140
15	23.84525478190	73.70636945750	31	23.84847385320	73.69955942510
16	23.84447660240	73.70596886480	32	23.84926242450	73.69990916960
			33	23.84991788480	73.70058454410

Details of Catchment Area/Zone of Influence of Sabella Talab Wetland falling within the boundary limit of Dungarpur, Rajasthan:-

Total Area Of = **33.11**

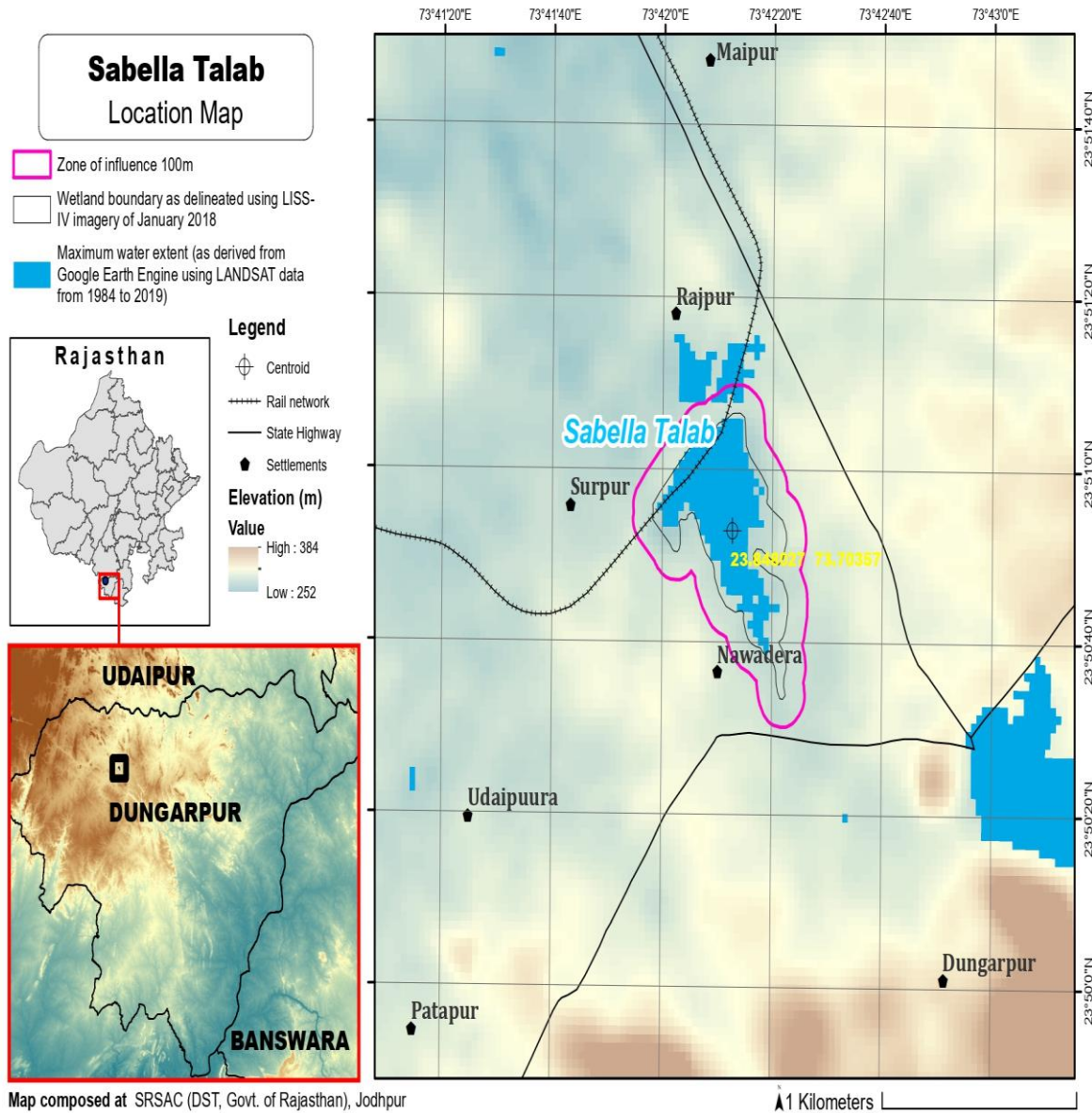
The geo-coordinates of Sabella Talab Wetland and its Zone of influence

Sabella Talab

S.no	Latitude	Longitude	S.no	Latitude	Longitude
1	23.84594801560	73.70737371620	18	23.84810976630	73.69861091220
2	23.84504952450	73.70732610830	19	23.84900596770	73.69858776730
3	23.84417955230	73.70721118280	20	23.84976898050	73.69909160080
4	23.84329136380	73.70725089360	21	23.85043023860	73.69975976330
5	23.84240733030	73.70720241800	22	23.85107228000	73.70045012660
6	23.84178155970	73.70652719560	23	23.85171057400	73.70114467450
7	23.84183692390	73.70557247990	24	23.85211858610	73.70198637660
8	23.84253315070	73.70498243510	25	23.85247023940	73.70287100400
9	23.84333537060	73.70464779090	26	23.85271939440	73.70379145190
10	23.84381067670	73.70382306080	27	23.85244559540	73.70469538650
11	23.84456637360	73.70331334830	28	23.85168672530	73.70515431490
12	23.84503408760	73.70250052280	29	23.85083369030	73.70536623310
13	23.84578649230	73.70196539330	30	23.85014531660	73.70600057360
14	23.84661118460	73.70161496250	31	23.84932800810	73.70634344600
15	23.84642951520	73.70076359910	32	23.84870128920	73.70702993320

16	23.84675198360	73.69987865930	33	23.84784319070	73.70730338540
17	23.84741375660	73.69921630470	34	23.84696747350	73.70709853400

The detailed Map of **Sabella Talab Wetland** and its Zone of Influence is annexed herewith as Schedule-I ('A').



Schedule-II

Prohibited Activities in Sabella Wetland :-

1. Conversion for non wetland uses including encroachments of any kind;
2. Setting up of any new industry and expansion of existing industries;
3. Manufacture or/and handling or/and storage or/and disposal of construction and demolition waste covered under the Construction and Demolition Waste Management Rules, 2016; hazardous substances covered under the Manufacture, Storage and Import of Hazardous Chemical Rules, 1989 or the Rules for Manufacture, Use, Import, Export and Storage of Hazardous Microorganism Genetically Engineered organized or cells, 1989 or the Hazardous Waste (Management, Handling and Transboundary Movement) Rules, 2008; electronic waste covered under the E-Waste (Management) Rules 2016; plastic waste covered under Plastic Waste (Management) Rules, 2016;
4. Solid waste storage and disposal;
5. Discharge of untreated waste and effluents from industries, cities, towns, villages and other human settlements;
6. Any construction of permanent nature except for boat jetties within fifty metres from the mean high flood level observed in the past ten years calculated from the date of commencement of these rules;
7. Commercial mining, stone quarrying and crushing units
8. Commercial water extraction Establishment of large scale commercial livestock and poultry farms;
9. Reducing area/ capacity of the water body;
10. Feeding of fishes and migratory birds by the public;
11. Any type of poaching.

Prohibited Activities in Catchment Area/Zone of Influence :-

1. Discharge of untreated Solid/liquid waste and effluents;
2. Manufacture or/and handling or/and storage or/and disposal of construction and demolition waste covered under the Construction and Demolition Waste Management Rules, 2016; hazardous substances covered under the Manufacture, Storage and Import of Hazardous Chemical Rules, 1989 or the Rules for Manufacture, Use, Import, Export and Storage of Hazardous Microorganism Genetically Engineered organized or cells, 1989 or the Hazardous Waste (Management, Handling and Transboundary Movement) Rules, 2008; electronic waste covered under the E-Waste (Management) Rules 2016; plastic waste covered under Plastic Waste (Management) Rules, 2016;
3. Extraction of commercial water including groundwater.
4. Any type of poaching;

Schedule-III

Regulated Activities in Sabella Wetland :-

1. Fisheries;
2. Plying of boats;
3. Desilting;
4. Construction of temporary structures;
5. Water extraction for certain purposes.

Regulated Activities in Catchment Area/Zone of Influence :-

1. Conversion of land for any type of construction;
2. Setting up of any new industries and expansion of existing industries;
3. Mining.

[F.No.6 (3) Env/2023]

By order of the Governor,

Shikhar Agrawal,

Additional Chief Secretary to the Government.

Government Central Press, Jaipur.